

ENVIRONMENTAL MANUAL

FOR ENERGY SAVING

STREETLIGHTING PROJECT

FOR

BIKANER MUNICIPAL CORPORATION

Prepared By :

Asian Electronics Ltd.

Esco - Project Division

68, MIDC, Satpur, Nashik- 422007

Ph.: +91-253-2365000, Fax: +91-253-2365010

E-mail: aeltha@vsnl.com, URL: www.aelgroup.com

TABLE OF CONTENTS

NO.	TITLE	PG.NO.
1.	1.1 SUMMARY	
	1.2 PROJECT OVERVIEW & DESCRIPTION OF THE PROJECT ACTIVITY	
2.	DESCRIPTION OF PROJECT AREAS	
	2.1 BIKANER City Plan	
3.	PROJECT IMPACTS AND MITIGATION OF IMPACTS	
	3.1 Short term Impacts & Mitigation	
	3.2 Long term Impacts & Mitigation	
4.	PROPOSED PLAN OF ACTION FOR PROJECT ON ENVIRONMENTAL ASPECTS	
	4.1 Handling / Storing of used / damaged light bulbs	
	4.2 Flow Chart showing Co-ordination at site	
	4.3 Removed fittings and lamps records	
	4.4 Lamps failed during O&M period	
	4.5 Replacement of Lamp record during maintenance	
5.	SAFETY OF WORKERS	
	5.1 Safety Measures for street lighting Installation & Maintenance	
	5.2 First Aid	
	5.3 Safety guidelines for workmen	
	5.4 Safety devices and tools	
	5.5 Safety kit distribution record	
6.	INSTALLATION AND REMOVAL OF ELECTRIC POLES	

1.1 EXECUTIVE SUMMARY

The existing HPSV & HPMV fixtures that light the roads are provided by the multi company and do not light the walkway sufficiently enough to meet Corporation safety standards . In support of the much required energy conservation measures the Municipal Corporation of Bikaner decided to replace old Sodium Vapour & FTL lamps with new T-5 energy saving street lighting fixtures in entire city.

No significant long-term losses or impacts to resources are anticipated with this project. While this project will be located near historic structures, no structures or other historic resources are expected to be significantly impacted.

Bikaner, situated in the northern part of Rajasthan, was founded in 1486 AD by the Rathore prince, Rao Bikaji, hence the name Bikaner. Bikaji was son of Rao Jodhaji who had asked his son to establish a kingdom of his own. The challenge was accepted and Bikaji choose the wild country 'Jangaladesh' as his territory and thus the city of Bikaner came into existence. A seven-kilometres wall with five entrances was built to protect the city from vagaries of the desert and any external aggression. The city flourished as an important trade centre between Gujarat seaports and West Asian countries. The unbroken line of descendants of Bikaji ruled Bikaner till India got Independence. Bikaner is also called the camel country, being renowned for the best riding camels in the world. It is also the birthplace of the world famous Bikaneri bhujia and namkeen (a salted snack made of lentils). The Camel Festival held every year is famous all over the globe. Bikaner has many magnificent buildings made of Reddish Pink sandstone that transcends the surrounding barren wilderness.

Junagarh Fort

The Junagarh Fort, built by Rai Singh between 1588 and 1593, has a 986-metre-long wall with 37 bastions, a moat and two entrances. Situated at a height of above seven hundred feet above sea level, it towers over the city and can be seen from a distance. The fort and its palaces are profusely decorated with magnificent stone carvings. The major buildings within the fort include the Anup Mahal, Diwan-e-Khas, Hawa Mahal, Badal Mahal, Chandra Mahal, Phool Mahal, Rang Mahal, Dungar Mahal, and Ganga Mahal. The Chandra Mahal has remarkable frescoes. Beautiful mirror work adorns the walls of Phool Mahal while golden pen work decorates the Anup Mahal.

Deshnoke Temple

Thirty kilometres south of Bikaner is the village of Deshnoke, where the famous Mata Karni Temple is situated. The 600-year-old temple is dedicated to Karni Mata, an incarnation of Goddess Durga. Legend has it that before embarking on his campaign, Rao Bhikaji sought the blessings of mystic Goddess Karni at Deshnoke. Since then the Karni Mata temple in Deshnoke continued to be patronized by the ruling family. Today hundreds of pilgrims flock the temple everyday to invoke the blessings of the Goddess, who is revered as an incarnation of Goddess Durga. The temple has huge intricately carved silver gates donated by Maharaja Ganga Singh. The temple plays host to thousands of rats that form the major attraction here. The rats are considered sacred and worshipped accordingly. One has to be very careful while entering the inner sanctum, because it is believed that if anyone accidentally steps on a rat, a gold replica has to be made to compensate for the lost life.

Disturbance of existing trees and shrubs will be avoided. Impacts to vehicle traffic in the area are expected to be moderate during installation and care already had been taken for that. The directions of traffic flow through the site during installation were coordinated with the City of Bikaner. After completion, there will be no vehicle traffic impacts. The proposed project will not generate significant demands on natural resources of the immediate or surrounding area.

This area is also not a significant wildlife habitat as it consists of paved streets and walkways, and lawn and landscaped areas.

AEL will incorporate the Commonwealth's pollution prevention policies in the construction of this project. During construction, the contractor will take the necessary measures to limit the short-term impacts. This will include noise, storm water, sediment, and erosion controls. The disposal of any hazardous wastes generated is managed by AEL and/or its subcontractors in compliance with pertinent Municipal and State regulations.

1.2 PROJECT OVERVIEW & DESCRIPTION OF THE PROJECT ACTIVITY:

The purpose of the project activity is to implement street lighting improvements as a Demand-side Management (DSM) strategy to save electricity consumption and reduce municipalities' energy budget using performance contracting under ESCO business.

Public street lighting represents a significant load for India. It is the responsibility of the municipal Corporations and the state electricity boards to provide this service to the country. In several municipalities, the electricity required for this service is not metered, providing little incentive for system improvement. Street lighting has to be invoiced at a

preferred rate by most of the utilities. This incurs large financial losses to the state electricity board. With a demand of more than 1,000 MW, public lighting represents approximately 1% of the total electricity consumed in India. Even if this represents a small percentage of the total consumption, it is an interesting segment due to its high potential for energy savings (average of 33% of the consumption).

The project will rely on an approach that was demonstrated by Econoler International and Asian Electronics Ltd in two pilot projects in India (at Indore and Ujjain) that received a financial support from the Canadian International Development Agency (CIDA). This route has yielded measured savings of close to 60% without reduction in lux levels. These two Projects established the validity of the concept, processes and formats for record and reporting for those to follow.

The present CDM Project replicates the scheme in 15 municipalities spread in India. The technology was changed to full replacement of existing FTL / HID fittings by energy-saving T5 lamp-based fittings with electronic ballast and load management system, viz,

- Replacement of low efficiency T12 FTL (40W) driven by magnetic ballast with high efficiency T5 FTL (28W) driven by electronic ballast
- Replacement of low efficiency single lamp HPS/MV/MH 70/125/150/250W driven by magnetic ballast with high efficiency multi-lamp T5 (14/24W) driven by constant wattage electronic ballast.
- Installation of Load Management System (LMS) panels at the Switching Points (SP)¹ to improve energy consumption of all fixture types including the T5 Fluorescent Tube Light installed at the respective SP.

Before implementation of the project, the municipalities had a lot of difficulties to maintain a good street lighting service for citizens. About 10 to 20% of fixtures were not operating because of an illegal connection, burned tube light or broken fixtures. The only way of upgrading the service to an acceptable level was to replace more and more fixtures with the same technology that the municipalities were used to. Another issue related to street lighting in India is the improper energy metering where monthly energy bills are not made as per the tariff based on the actual meter readings or energy bills for non-metered are based on the connected load and the monthly operating hours. The project proponent had been able to convince the municipalities to choose more expensive, but more efficient, equipment using the following arguments:

- It would be financed through a third party and implemented using a performance contracting concept. This means it provided the technology, entire funding and Monitoring & Verification (M&V) after the construction. If there is no saving, the project promoter will not get paid.

- The opportunity exists to leverage a portion of the required financing through the sale of Certified Emission Reduction (CER).
- The revenues generated by energy savings and CER will be shared between AEL and the participating municipalities after deduction of expenses.
- Revenue and costs will be allocated to the set of ESCO projects covered in proportion to the CERs generated by the respective project to the total of CERs generated by all projects

Project structure

The project structure and relations between the project entities are presented in the following figure

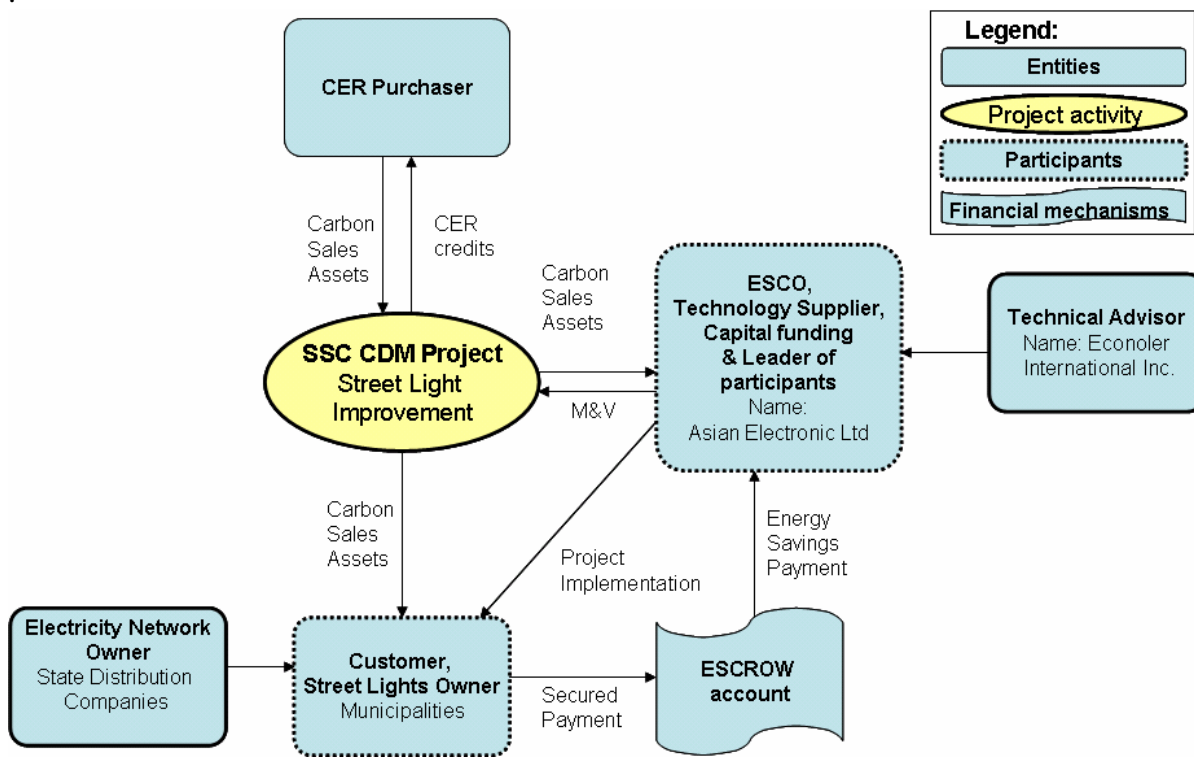


Figure 1: Energy Efficient Street Lighting CDM Project Activity Structure

Asian Electronic Limited: AEL is a private international company and was the lead participant of this SSC CDM project. As an ESCO, AEL signed a performance contract with its customers (the municipalities) and guaranteed the savings. AEL assumed the entire project implementation for its customers. This means it provided the technology, entire funding and Monitoring & Verification (M&V) after the construction. It also provided M&V for the CER accreditation procedure. It was furthermore responsible for maintaining the service to an acceptable level by ensuring a minimum number of fixtures turned off.

Municipalities: The Municipalities were the project sponsors. They are public entities. The Municipalities were AEL's customers. They pay AEL's services after the construction based on energy savings achieved. The typical payment is secured in an escrow account that will cover the monthly bills, but allow the municipalities to utilize any potential saving from reduced consumption. This provides the municipalities with incentive to adopt the projects and ensure they are maintained.

Distribution Companies: Distribution companies are wholly owned by State Electricity Boards (SEB). SEBs are state Government owned companies responsible for the electricity production. They are stakeholders in the energy savings project and could provide support for upgrading the metering system for this DSM project.

Econoler International: EII is a Canadian private company and acted as the project developer. EII was a technical advisor for the implementation of the Street Light Improvement Program and also provided carbon consulting.

Technology and Measures The replacement of existing fixtures by efficient T5 fluorescent tube lights leads to significant reduction in the power usage. Also, both Sodium and Mercury Vapour HID fittings can be replaced with new design multi-tube T5 streetlights which have been working successfully in pilot installations for the last two years and more. This option has yielded energy savings up to 60% and power factor (PF) better than 0.95 compared to 0.6 to 0.7 normally observed in old installations. A new dimming technology could also be integrated to the street lighting system to further reduce their energy usage during low traffic hours (usually after midnight). However, for public security reasons, this dimming is often limited to about 20%. These modifications to the existing street lighting system will also result in the reduction of power demand and distribution line losses in the network. With energy saving of 60% and PF improvement from 0.7 to 0.95, the KVA demand could reduce by as much as 70%. System measurements revealed that the wiring of the street lighting system is often stretched to the limit with significant overheating and high line losses associated with the connected load and power factor. Using a more efficient technology will significantly allow reducing line losses of the street lighting system. The combination of the technology change, and reduced line losses also effectively reduces or eliminates system saturation, thus doing away with overloading &/or making available capacity for additional fittings without requiring a complete rewiring of the system.

In the framework of this project, these two measures have been carried out:

(a) Replacement of low efficiency T12 Fluorescent Tube Light (40W) with magnetic ballast with high efficiency T5 Fluorescent Tube Light (28W) with electronic ballast

The high efficiency devices installed can save electricity up to 40-45% without reducing light level if they replace T12 fixtures because of the following characteristics. The

luminous efficiency is 104 lumens/W (T5 triphosphor on electronic ballast) and even more if considering the retrofit shield effect. In comparison, the T12 efficiency is about 70 lumens/W.

(b) Replacement of low efficiency single lamp HPS/MV/MH 70/125/150/250W driven by magnetic ballast with high efficiency multi-lamp T5 (14/24W) driven by constant wattage electronic ballast.

The high efficiency devices installed can save electricity up to 60% with the required light level if they replace HID fixtures. T5 FTLs have a much longer lamp life of around 20 000 hrs which is much higher than the average HID lamps having life of nearly 10 000 hrs under field conditions and electronic ballast yields to power factors higher than 0.95 as compared with 0.6 to 0.7 of HID lamp driven by magnetic ballast.

(c) Installation of Load Management System (LMS) panels at the switching points to improve the energy consumption of all other fixture types.

This incidentally will also improve the consumption of the T5 Fluorescent Tube Light installed at the respective switching point. The LMS can save electricity up to 35% when it is installed on a SP:

- Controlled operation of the fixtures through advanced microprocessor technology (like dimming light during low traffic hours).
- Maintains the input voltage wave form without inducing any noise and harmonics.
- Equipped with a voltage monitor to protect the fixtures from operating at too low or too high voltage.

The fixtures types found in significant number in municipalities are presented in the following table.

Table 1 : Types of Fixtures and Energy Efficiency Measure Related to each Type

Low-efficiency Fixture Description, Before Project Implementation	High-efficiency Fixture Description AND/OR Energy Efficiency Measure Taken During Project Implementation	Savings Forecast
1x40W T12, 4' T12 Tube light with magnetic ballast	1x24W, 4' T5 tube with Electronic ballast	50%
125W MH with magnetic ballast	65 W CFL Streetlight, with electronic ballasts	59%
150W SVL with magnetic ballast	4x14W 2' T5 Streetlight	70%
250W SVL with Magnetic Ballast	4x24W 2' T5 Streetlight	67%
HID lamps of all types	Controlled Load Management Panel	42%
100 W GLS Lamp	18 W CFL Moon Light	81%

2. DESCRIPTION OF PROJECT AREAS

The project boundary is the physical, geographical location of each measure (each piece of equipment) installed.

In case of the project, the project boundary is the physical, geographical location of each replaced fixture so the project boundary has the same limit than the municipalities. The project boundaries were precisely defined during the baseline measurement campaign performed along with an Investment Grade Energy Audit. For this purpose, a complete list of all fixtures actually replaced is prepared. The project excludes all equipment that is out of this list. The following figure illustrates an example of the project in Bikaner

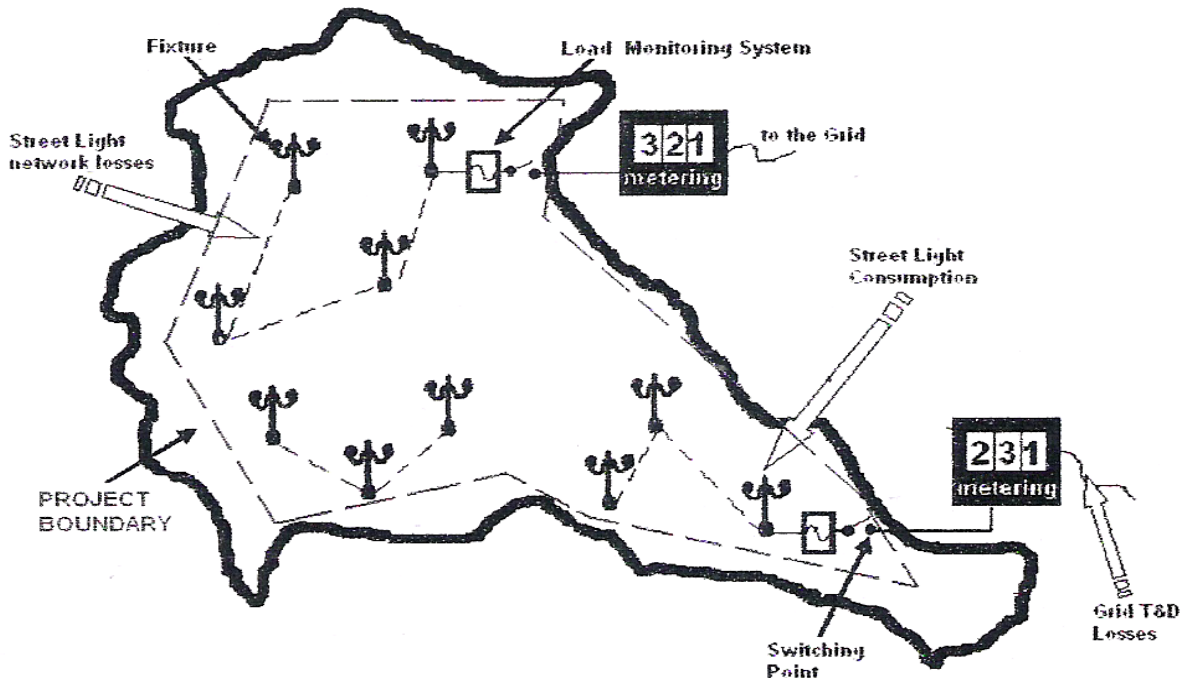


Figure 2: Boundaries of Street Lighting Project in Bikaner.

1. Proposed Plan of Action for the Project on Environmental aspects (will cover all the three issues as highlighted above) including responsible persons, budget if any required.
2. **Handling / Storing used/damaged light bulbs** (replaced or installed under the project as well as rejects) put out of use – proper storage before ultimate disposal in line with guidelines being developed by BEE.
3. **Safety of Workers** – Provision of personal protective equipment, traffic arrangements during installation of equipment, and emergency procedures in case of shocks, falls or other accidents.

4. **Installation and Removal of electric poles** – precautions to be taken to avoid any impact on locally important cultural resources such as shrines, temples or any important items found accidentally during excavation.



Figure-2.1 Bikaner Municipal Corporation Boundary Plan

3. PROJECT IMPACTS AND MITIGATION OF IMPACT

Normally, these impacts can be divided into short-term installation related impacts and long-term impacts; however, with this project there are no significant long term detrimental impacts. The short-term impacts include installation traffic and noise, dust, increased sediment transport from the site, and disruption of vehicle and pedestrian traffic. The AEL and the Municipal Corporation of Bikaner has worked with the State and local governments to ensure that all ordinances and laws are complied with during installation and operation of the facility. The specific impacts and mitigation measures are detailed below:-

3.1 Short-Term Installation Impacts and Mitigation

The impacts related to installation will likely include local increases in traffic, noise, dust, and sediment transport from the site, and disruption of vehicle and pedestrian traffic. These items will be addressed by the AEL to installation the facility and will include the following:

(a) Traffic – For traffic control and safety, installation vehicles will enter and leave the site at controlled points only. Workers will be used to direct vehicles and pedestrians to facilitate the movement of installation vehicles. Installation barriers will be erected for safety and to direct pedestrian traffic safely around the installation site. Traffic flow through the site will be coordinated with the City of Bikaner as necessary.

(b) Noise - Site work activities are restricted to daytime operations. Attempts are also be made to limit unnecessary noises during the day so as to limit impact to the adjoining buildings containing offices, classroom, and residences. This is a short-term impact that will cease when the installation is completed.

(c) Dust – As the project involves only replacement of streetlights, no digging activity takes place , thus no dust is generated.

(d) Particulates in Air - Particulate emissions will be controlled by the off-site disposal of installation and removal debris. Burning of such materials will not be allowed on the site. Any lead, mercury and plastic containing materials will be removed by licensed abatement contractors using appropriate means to limit particulate emissions.

(e) Generated Wastes - Environmentally deleterious materials generated by the replacement activities, such as old or broken lamps will be stored separately & disposed in an appropriate, legal, and safe manner. In the event that hazardous wastes are generated

during elimination, the contractor will properly dispose of them off site in accordance with appropriate disposal regulations

3.2 Long-Term Impacts and Mitigation

There is a potential for historic facility impacts, however, these are not expected to be significant.

1. Wastes: The operation of these lighting fixtures will not generate waste except failed lamps which will be stored separately and disposed as per the BEE guidelines.

2. Vegetation and Habitat Loss: Careful coordination will occur so as not to disturb any existing landscaping.

3. Water Consumption: This project will not result in any change in water consumption at Municipal Corporation Area of Bikaner.

4. Water Quality: No water quality impacts are anticipated.

5. Noise: The operation of these lighting fixtures will not generate any noise.

JunagarhFort

The Junagarh Fort, built by Rai Singh between 1588 and 1593, has a 986-metre-long wall with 37 bastions, a moat and two entrances. Situated at a height of above seven hundred feet above sea level, it towers over the city and can be seen from a distance. The fort and its palaces are profusely decorated with magnificent stone carvings. The major buildings within the fort include the Anup Mahal, Diwan-e-Khas, Hawa Mahal, Badal Mahal, Chandra Mahal, Phool Mahal, Rang Mahal, Dungar Mahal, and Ganga Mahal. The Chandra Mahal has remarkable frescoes. Beautiful mirror work adorns the walls of Phool Mahal while golden pen work decorates the Anup Mahal.

Lalgarh Palace

Built by Maharaja Ganga Singh in memory of his father, the Lalgarh Palace is situated 3 km north of Bikaner city. Designed by Sir Swinton Jacob, the palace is quite imposing with overhanging balconies and delicate latticework. Peacocks and blooming bougainvillea in the garden welcome the visitor to the palace. The palace houses a museum now and three different heritage hotels.

The Site is located near historic structures;. However, this project will improve the view of the Fort Street by eliminating HPSV/HPMV and installing T-5 energy efficient light fixtures.

7. Parks, rivers, and other recreational areas will not be impacted.

8. Traffic: No long term impacts to local traffic are anticipated.

9. Wildlife refuges, wetlands, wilderness areas, and other important natural areas will not be impacted.

10. Public or private water supplies and/or significant water supply watersheds will not be impacted.

11. Endangered, threatened, or rare plants, animals or insects will not be measurably impacted by this project. No unique or other important terrestrial vegetation will be impacted. The site consists of a paved road, walkways, and lawn areas.

12. This project will not impact geologic or mineral resources. There are no significant geologic or mineral resources at the Site.

4. PROPOSED PLAN OF ACTION FOR PROJECT ON ENVIRONMENTAL ASPECTS:

Handling / Storing of used / damaged light bulbs:

4.1 Old lamps removed during installation

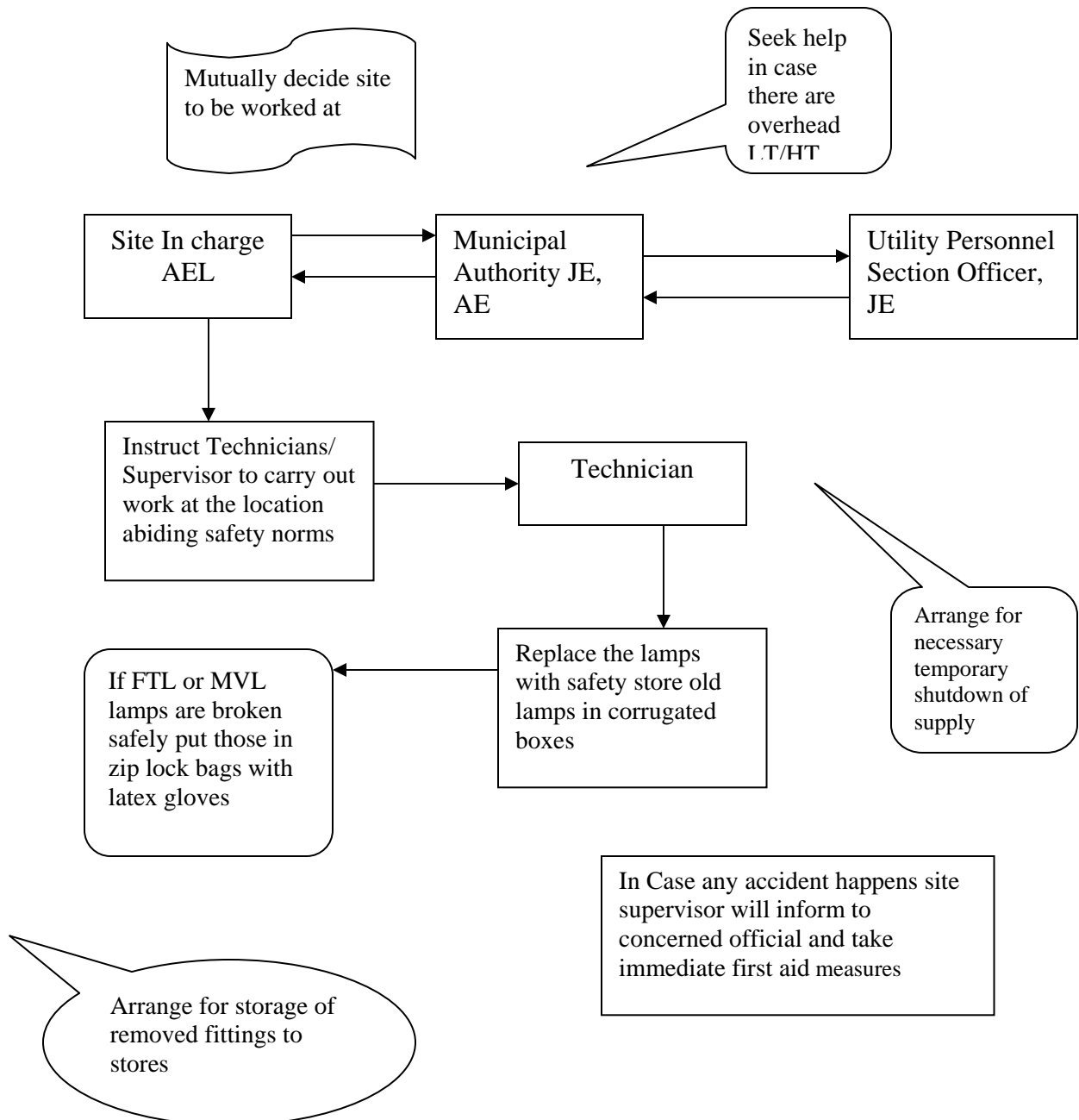
During installation of new energy saving streetlights, old streetlights are removed and stored in the corrugated box along with the lamps fitted into the old fittings in case of sodium vapor lamps. In case of replacement of old fluorescent tube light fittings, the lamps are carefully removed first followed by the fitting. The lamps are kept in a separate box. A record sheet (given below) is maintained while removing the old fittings mentioning the number of lamps removed.

These old removed fittings & lamps are transported daily to the place of storage (store depots / ward office stores) given by the Corporation. The old fittings are then kept in a proper store room under lock & key. The units are not allowed to be used for re-installation.

Any lamps broken during the removal, transportation or storage of the old fittings are carefully collected and kept in a separate corrugated box for further disposal. The box is kept properly in the stores.

The responsibility of the old fittings and lamps stored rests with the respective Jr.E./ A.E. stores in-charge / J.E/ A.E. (ward office) in-charge in the respective municipal Corporations. Data format from site is being given below for reference:-

4.2 A flow-chart is being given below which shows the significance role while carrying out installation & maintenance work at site:



4.3 Removed Fittings and Lamps Record during installation

Energy Saving Streetlight Project: Bikaner Municipal Corporation

Date	No. of Fittings Removed	Type of Fittings 40W / 125W / 150W / 250W					No. of Fixtures /Covers Broken During Installation	No. of Fixtures / Lamp missing				
		40W	100 W	125 W	150W	250 W		40 W	100 W	125 W	150 W	250 W
5/8/08	56	0	0	0	33	23	0	0	0	0	2	1
6/8/08	47	0	0	0	19	28	0	0	0	0	0	0
7/8/08	32	0	0	0	0	32	0	0	0	0	0	1
8/8/08	20	0	0	0	0	20	1	0	0	0	0	0
9/8/08	25	0	0	0	5	20	0	0	0	0	0	0
10/8/08	57	0	0	0	23	34	0	0	0	0	0	0
11/8/08	80	0	0	0	3	77	0	0	0	0	0	1
12/8/08	76	0	0	0	21	55	0	0	0	0	0	0
13-08-08	15	0	0	0	0	15	2	0	0	0	0	0
14-08-08	13	0	0	0	3	10	0	0	0	0	0	0
28-09-08	13	0	0	0	13	0	0	0	0	0	0	0
30-09-08	85	35	0	0	50	0	0	5	0	0	2	0
1/10/08	156	90	0	0	66	0	1	12	0	0	0	0
2/10/08	144	94	0	0	50	0	0	15	0	0	3	0
3/10/08	113	66	0	0	47	0	1	5	0	0	0	0
4/10/08	9	0	0	0	9	0	0	0	0	0	0	0
5/10/08	132	98	0	0	34	0	0	0	0	0	0	0
6/10/08	224	174	0	0	50	0	0	27	0	0	0	0
7/10/08	171	88	0	0	83	0	3	10	0	0	1	0
8/10/08	118	71	0	0	47	0	0	6	0	0	0	0
9/10/08	178	107	0	0	71	0	0	11	0	0	0	0
10/10/08	190	105	0	0	85	0	0	13	0	0	3	0
11/10/08	216	139	0	0	77	0	2	8	0	0	0	0
12/10/08	195	123	0	0	72	0	0	12	0	0	0	0
13-10-08	172	115	0	0	57	0	0	10	0	0	0	0
14-10-08	165	96	0	0	69	0	0	5	0	0	1	0
15-10-08	219	161	0	0	58	0	0	14	0	0	0	0
16-10-08	288	126	0	49	113	0	2	11	0	0	2	0
17-10-08	331	153	0	81	97	0	0	10	0	0	0	0
18-10-08	226	153	0	0	73	0	0	5	0	0	0	0
19-10-08	378	221	0	64	93	0	0	32	0	2	1	0
20-10-08	331	166	0	76	89	0	0	16	0	0	0	0
21-10-08	275	186	0	0	89	0	1	15	0	0	0	0
22-10-08	214	124	0	0	90	0	0	12	0	0	0	0
23-10-08	223	166	0	0	57	0	0	0	0	0	0	0

24-10-08	197	123	0	0	74	0	0	0	0	0	0	0
25-10-08	139	80	0	0	58	1	0	13	0	0	0	0
26-10-08	42	1	0	0	41	0	0	0	0	0	1	0
31-10-08	127	93	0	0	34	0	0	17	0	0	0	0
1/11/08	161	122	0	0	39	0	0	10	0	0	0	0
2/11/08	287	158	0	58	71	0	0	20	0	0	0	0
3/11/08	268	201	0	0	67	0	1	32	0	0	0	0
4/11/08	232	117	0	37	78	0	0	10	0	0	0	0
5/11/08	353	213	0	58	82	0	0	15	0	0	2	0
6/11/08	292	205	0	0	87	0	0	13	0	0	1	0
7/11/08	146	45	0	92	9	0	0	5	0	0	0	0
8/11/08	16	1	0	0	15	0	0	1	0	0	0	0
9/11/08	170	94	0	0	76	0	0	18	0	0	0	0
10/11/08	156	101	0	0	55	0	0	14	0	0	0	0
11/11/08	58	35	0	0	23	0	0	0	0	0	0	0
12/11/08	156	108	0	0	22	26	3	25	0	0	0	0
13-11-08	133	66	0	0	58	9	0	0	0	0	0	0
14-11-08	141	125	0	0	16	0	0	15	0	0	0	0
15-11-08	217	209	0	0	0	8	0	27	0	0	0	0
16-11-08	295	270	0	0	0	25	0	29	0	0	0	0
17-11-08	171	160	0	0	0	11	0	18	0	0	0	0
18-11-08	181	171	0	0	0	10	0	12	0	0	0	0
19-11-08	124	94	0	0	0	30	0	16	0	0	0	0
20-11-08	205	177	0	0	0	28	0	22	0	0	0	0
21-11-08	54	54	0	0	0	0	0	12	0	0	0	0
22-11-08	103	100	0	0	3	0	0	0	0	0	0	0
23-11-08	132	0	0	0	0	132	0	0	0	0	0	2
24-11-08	42	23	0	0	0	19	0	5	0	0	0	0
25-11-08	89	43	0	0	21	25	0	0	0	0	0	0
26-11-08	39	0	0	0	0	39	0	0	0	0	0	0
27-11-08	25	0	0	0	0	25	0	0	0	0	0	0
28-11-08	10	0	0	0	10	0	0	0	0	0	0	0
29-11-08	96	0	0	0	1	95	0	0	0	0	0	0
30-11-08	4	0	0	0	0	4	0	0	0	0	0	0
7/12/08	80	0	0	80	0	0	0	0	0	0	0	0
12/12/08	51	11	0	0	40	0	1	0	0	0	0	0
13-12-08	36	0	0	0	36	0	0	0	0	0	0	0
24-12-08	77	28	0	0	49	0	0	0	0	0	0	0
25-12-08	31	0	0	0	31	0	0	0	0	0	0	0
26-12-08	27	3	0	0	24	0	0	0	0	0	0	0
2/1/09	19	12	0	0	7	0	0	0	0	0	0	0
3/1/09	59	36	0	0	23	0	0	10	0	0	0	0
4/1/09	18	4	0	0	14	0	0	0	0	0	0	0
5/1/09	52	34	0	0	18	0	2	0	0	0	0	0
6/1/09	59	35	0	0	24	0	0	6	0	0	0	0
7/1/09	43	11	0	25	7	0	0	2	0	0	0	0
8/1/09	28	3	0	21	4	0	0	0	0	0	0	0

9/1/09	51	23	0	11	17	0	0	0	0	0	0	0
10/1/09	85	50	0	0	35	0	1	18	0	0	0	0
11/1/09	64	38	0	0	26	0	0	12	0	0	0	0
12/1/09	36	6	0	0	30	0	0	2	0	0	0	0
13-01-09	50	41	0	0	9	0	0	0	0	0	0	0
14-01-09	12	3	0	0	9	0	0	0	0	0	0	0
15-01-09	28	4	0	0	2	22	0	0	0	0	0	0
16-01-09	15	3	0	0	6	6	0	0	0	0	0	0
17-01-09	8	8	0	0	0	0	0	0	0	0	0	0
18-01-09	0	0	0	0	0	0	0	0	0	0	0	0
19-01-09	35	15	0	0	20	0	1	6	0	0	0	0
20-01-09	27	11	0	0	4	12	0	4	0	0	0	0
21-01-09	13	9	0	0	4	0	0	0	0	0	0	0
22-01-09	8	0	0	0	8	0	0	0	0	0	0	0
23-01-09	40	3	0	25	12	0	0	2	0	0	0	0
24-01-09	21	1	0	0	20	0	0	0	0	0	0	0
25-01-09	10	0	0	0	0	10	0	0	0	0	0	0
26-01-09	0	0	0	0	0	0	0	0	0	0	0	0
27-01-09	24	6	0	0	18	0	0	0	0	0	0	0
28-01-09	1	1	0	0	0	0	0	0	0	0	0	0
29-01-09	23	23	0	0	0	0	0	7	0	0	0	0
30-01-09	34	15	0	0	17	2	0	8	0	0	0	0
31-01-09	32	18	0	0	0	14	0	5	0	0	0	0
1/2/09	90	39	0	9	31	11	0	14	0	0	0	0
2/2/09	43	15	0	1	25	2	0	0	0	0	1	0
3/2/09	0	0	0	0	0	0	0	0	0	0	0	0
8/2/09	33	0	20	0	13	0	0	0	0	0	0	0
9/2/09	0	0	0	0	0	0	0	0	0	0	0	0
10/2/09	0	0	0	0	0	0	0	0	0	0	0	0
11/2/09	0	0	0	0	0	0	0	0	0	0	0	0
12/2/09	0	0	0	0	0	0	0	0	0	0	0	0
13-02-09	0	0	0	0	0	0	0	0	0	0	0	0
29-03-09	2	0	0	0	2	0	0	0	0	0	0	0
31-03-09	25	10	0	0	15	0	0	2	0	0	0	0
2/4/09	26	0	0	0	20	6	0	0	0	0	0	0
1/4/09	67	25	30	0	10	2	0	9	0	0	0	0
5/4/09	55	10	35	0	6	4	0	5	0	0	0	0
10/4/09	69	20	40	0	5	4	0	2	0	0	0	0
15/4/09	63	9	42	0	10	2	0	0	0	0	0	0
23/04/09	4	3	0	0	0	1	0	0	0	0	0	0
Total	11722	6632	167	687	3337	899	22	717	0	2	20	5

Store Incharge
BMC, Bikaner

Site-Incharge
AsianElectronics Ltd

4.4 High Mast Fittings and Lamps Record during installation Energy Saving Streetlight Project: Bikaner Municipal Corporation 08-09

Sl. No	Switching Point	High Mast Capacity	Installation Date	Completion Date
1	Public Park, Inside Water Founten	10 KVA, 3 ϕ , 16 A, 440 V	7/3/2009	7/3/2009
2	Junagarh, Infront of Gansesh Temple.	10 KVA, 3 ϕ , 16 A, 440 V	7/3/2009	7/3/2009
3	Junagarh, Infront of Kacheri, Kacheri Rd.	10 KVA, 3 ϕ , 16 A, 440 V	8/3/2009	8/3/2009
4	Rani Bzr. Chauraha, Infront of Mohan Sweets.	10 KVA, 3 ϕ , 16 A, 440 V	8/3/2009	8/3/2009
5	Infront of Bikaner Railway Station, Station Rd.	10 KVA, 3 ϕ , 16 A, 440 V	8/3/2009	8/3/2009
6	Fad Bzr. Chauraha, Court Gate, KEM Rd.	10 KVA, 3 ϕ , 16 A, 440 V	10/3/2009	10/3/2009
7	Shadul Singh Circle, Infront of Chautina Kuwan.	10 KVA, 3 ϕ , 16 A, 440 V	9/4/2009	9/4/2009
8	Urmul Dairy Circle, Ganga Ngr. Rd.	10 KVA, 3 ϕ , 16 A, 440 V	10/4/2009	10/4/2009
9	Pannalal Statue, Station Rd. Nr. IG & PWD Quarters.	10 KVA, 3 ϕ , 16 A, 440 V	10/4/2009	10/4/2009
10	J.N.V. Circle, Infront of College, Golchakar	10 KVA, 3 ϕ , 16 A, 440 V	9/4/2009	9/4/2009
11	Ambedkar Circle, Infront of Pashwanath Juice Center.	10 KVA, 3 ϕ , 16 A, 440 V	7/4/2009	7/4/2009
12	Ramratan Kocher Statue, Nokha Rd.	10 KVA, 3 ϕ , 16 A, 440 V	8/3/2009	8/3/2009
13	Jassusar Gate, Gangaur Chauk.	10 KVA, 3 ϕ , 16 A, 440 V	9/4/2009	9/4/2009
14	Ganga Shaheer Chauraha, Nr. Vidyaniketan School.	1 10 KVA, 3 ϕ , 16 A, 440 V	13/4/2009	13/4/2009
15	Transport Ngr.Yojana, Ganaga Ngr. Rd.	10 KVA, 3 ϕ , 16 A, 440 V	13/4/2009	13/4/2009
16	Nathusar Gate, Gokul Circle.	10 KVA, 3 ϕ , 16 A, 440 V	13/4/2009	13/4/2009

4.5 Lamps failed during the O & M period

During the O & M (operation & maintenance) period of the project, the fittings are being monitored for failures in lamps. The faulty lamps are replaced with new lamps. The faulty lamps are brought back to the maintenance depot / office and stored safely in corrugated box. These lamps are stored until further instructions of disposal as per BEE norms are received.

The responsibility of storage of these lamps rests with the Service in-charge of the company in the respective cities. A data format is being attached for reference that is being maintained at site.

4.5 Monitoring and reporting mechanism for replaced lamps during maintenance

Energy Saving Streetlight Project: Bikaner Municipal Corporation

Month	No. of Lamps Changed	No. of Fixtures Lamp Missing / Damaged	Remarks
Nov-08	350	Nil	
Dec-08	410	10	
Jan-09	450	19	
Feb-09	500	30	
Mar-09	672	50	

Service In charge

5. SAFETY OF WORKERS:

The installation of the new fittings is done by workers as per the safety guidelines given. Firstly the installation is done during the day-time with the entire power supply to the fittings shut OFF. This is done by removing the fuse from the feeder points. Before the start of installation the concerned Corporation officials are informed about the exact location of the work, in order to avoid any accidental switching ON of the power by another maintenance team.

While installation the workers are provided with helmet, rubber gloves, rubber shoes, insulated tools and safety belts.

Proper care is taken to divert the traffic while carrying on the installation. Sign boards indicating “Work in progress” are put on the road where necessary. One worker is always standing on the road ahead of the ladder & diverting the traffic.

The workers are provided with proper extension type ladders for installation of streetlights above 7 meters. The ladders are provided with safety platforms covered from all sides for safety of the worker. At lower heights wooden ladder is used for removing the fittings for repairs.

Proper medical kit is carried containing bandages & medicines. Wooden ladders/ bamboos are kept handy in case of any emergency of shock.

All the workers are covered under state insurance scheme. This gives them free medical treatment in case of any accident or illness in their dedicated hospitals. In case of any accident the workers are given first aid at the nearest medical center / hospital. If required the worker is then taken to the ESIC hospitals for further treatment.

5.1 SAFETY MEASURES FOR INSTALLATION AND MAINTENANCE OF STREETLIGHTS

A. Safety requires proper planning of work, proper usage of safety tools, exercise of good judgment and intelligent supervision. Experience proves that majority of the accidents are preventable.

- (i) Prevention of accidents requires the wholehearted co-operation of all employees of the organization. A capable mentally alert employee will avoid accidents.
- (ii) A careless man is a liability to the Organization. He is dangerous to himself, his fellow workers, the public and the Organization.
- (iii) Accidents do not just happen. Accidents are the result of unsafe acts or unsafe conditions or a combination of both.

B. Unsafe Acts: Which may cause accidents, include the following:

- (i) Opening and Closing of switches without authority or warning, Pushing ladders on road without giving attention towards traffic, failure to place warning signs or signals where needed.
- (ii) Working unsafely such as throwing materials or tools, at another worker, jumping from vehicles and platforms, or unnecessary haste.
- (iii) Not using the safety tools provided.
- (iv) Using unsafe equipment, wrong tools for the job, or using hands instead of hand

tools.

- (v) Working on live electrical equipment unless necessary (with safety precautions) in cases of energy meter installations at switching points.
- (vi) Working while ladder is in unsafe/tilted position.
- (vii) Distracting, teasing, practical joking, horseplay, quarrelling or annoying.
- (viii) Failure to use safe clothing or protective equipment such as failure to use rubber gloves, helmet.

C. Unsafe conditions: Which may result in accidents include the following:

- (i) While working with ladder on roads, which are skewed, widthwise from center it is always possible the ladder itself will tilt and it will be unsafe to climb on it to replace a fixture on pole.
- (ii) There can be overhead utility LT/HT lines while the fixture on pole might be at few inches from those lines. All anticipated hazards should be pointed out to workers.

D. General Instructions for Safety

(i) Responsibility of Individuals:

Definite responsibility of individuals is to act so as to provide

- Safety to himself.
- Safety to his fellow employees.
- Protection to the Public.
- Protection to the Organization property.
- Every employee is expected to study the Safety Manual, familiarize himself with its contents and apply them to work. Ignorance of Rules and Regulations will result in accidents to himself and his co-workers.
- Whenever in doubt regarding any rules and regulations, he should consult his Supervisor.
- Before attempting any work under conditions that he considers to be unsafe, he is required to bring them to the attention of the person-in-charge of the work and seek his advice.
- It will be the duty of every employee to report promptly to his Supervisors any dangerous or improper condition of equipment he notices.

(ii) Personal Conduct:

- Use of intoxicating liquor while on job is strictly prohibited. No employee shall report for work while he is under the influence of liquor and no supervisor shall knowingly permit a man to go to work while he is under the influence of liquor.

- Practical joking and horseplay while on the job is strictly prohibited.
- No employees shall distract the attention of another worker from his job unless he thinks that the worker is doing something, which is dangerous.
- Any employee who endangers his own or other's safety by violating the foregoing requirements of personal conduct shall render himself liable to disciplinary action.

(iii) Always Be Careful (A B C):

The workman should place himself in a safe position while working to avoid falling, stumbling, or moving backwards against live parts. The workman should satisfy himself regarding the safe working conditions before starting the work. The care exercised by others should be checked.

5.2 FIRST AID

(a) Removal from Contact

If the person is still in contact with the apparatus that has given the shock, switch off the electric circuit at once, if there is switch, fuse or circuit breaker close at hand, if not, lose no time from proceeding to remove the body from contact with the live conductor.

- Do not touch the victim's body with bare hands, but if rubber gloves are not at hand, pull him off the live conductor by his coat, shirt, etc., if they are not wet or fold your coat, or some dry article such as a news- paper into three or more folds/ thickness, and using this as a pad, take hold of the body and pull it away from the circuit. An operating rod or a broom handle may be used to raise the body or to detach the wires from it. A good plan is to stand on a dry board or stool or on a few layers of thick newspaper or bundle of dry sacking and remove the victim away from the live apparatus.

(b) Treatment from Electric Shock, Asphyxiation

- In most of the cases of electric shock and collapse, it is the lungs and the diaphragm (the thin sheet of muscles which lies below the lungs) that have stopped working and there is a very good chance of revival by applying artificial respiration quickly.
- In case of severe shock, respiration is seldom established under one hour while three to four hours or more might be found necessary to restore normal breathing. It is therefore, essential that in all cases of electric shock where the condition of the patient is doubtful or the patient is unconscious or not breathing, artificial resuscitation should be

continued until the patient breathes normally or until the doctor has pronounced life extinct.

5.3 SAFETY GUIDELINES FOR WORKMEN

- While working for installation or maintenance, first ensure that the power is switched OFF to the network of streetlights by removing the fuses on load side.
- Carry all the safety tools and always uses a safety belt when climbing on the ladder or pole. Clamp the safety belt on the ladder or the main pole while changing the fitting.
- Wear rubber gloves or gauntlets for touching any electrical parts inside or near switching point.
- During maintenance work with the switching point e.g. timer, contactor maintenance, ensures that is accompanied by an assistant with an effective torch light if working at night.
- Before a technician undertakes any work on a pole or any other line support, he should first make a complete inspection from the ground of the position of all live wires, in order to determine the amount of precautions to be adopted and should inspect his insulating equipment and operating tools and tackles for their good condition before he attempts to do the actual work.
- Usually pushing type aluminum ladders tend to become vulnerable due to vibrations they encounter on uneven roads as the nut bolts get loosened so it is needful to have through checkup periodically say after one weeks use and necessary steps are to be taken so that ladder can be used without any risk to anybody.
- While climbing on ladder he should have his hands free and after reaching the work platform he should wear the safety belt tied to the ladder.

5.4 SAFETY DEVICES & TOOLS

The following are the minimum requirements of safety devices and special tools:

- a. Safety Helmets
- a. Rubber Gloves
- b. Safety Belts
- e. Ladders
- f. Ropes
- g. Hand Tools kit
- h. First aid box containing Dettol, bandage, burnol, cotton, painkiller pills .

5.5 Daily records of Safety Kit distribution during installation Energy Saving Streetlight Project: Bikaner Municipal Corporation

Safety Kit includes: helmet, rubber gloves, rubber shoes, insulated tools, safety belts & first aid box given to five teams.

Date	Site Location	No. Of Technicians	Safety Equipments Used	Duration Of use	
				From Time	To Time
5.8.08	Rani Bzr. Over Bridge.	25	Safety Kit (5 nos)	8.00 am	5.00pm
5.8.08	Karni Ngr. Nr. House No. 132	14	Safety Kit (5 nos)	8.30 am	5.00pm
6.8.08	Karni Ngr. Nr. House No. 146	12	Safety Kit (5 nos)	8.00 am	5.30pm
7.8.08	Karni Ngr. Nr. House No. 395	18	Safety Kit (5 nos)	9.00 am	5.30pm
7.8.08	Karni Ngr. Nr. House No. A/16	20	Safety Kit (5 nos)	9.00 am	5.30pm
8.8.08	Karni Ngr. Nr. House No. A/23	16	Safety Kit (5 nos)	8.40 am	5.00pm
8.8.08	Gandhi Ngr. House No. 142	18	Safety Kit (5 nos)	8.30 am	5.00pm
9.8.08	Ganga Ngr. Rd. Nr. Dr. Radha Krishna Bhavan.	19	Safety Kit (5 nos)	8.30 am	5.00pm
9.8.08	Ganga Ngr. Rd. Nr. Niroj Hotel	8	Safety Kit (5 nos)	8.30 am	5.00pm
9.8.08	Ganga Ngr. Rd. Nr. RSEB Power House.	21	Safety Kit (5 nos)	8.30 am	5.00pm
10.8.08	Ganga Ngr. Rd. Nr. Tisari Batalian.	10	Safety Kit (5 nos)	8.30 am	5.00pm
10.8.08	Ganga Ngr. Rd. Nr. Tenth Batalian.	11	Safety Kit (5 nos)	8.30 am	5.00pm
11.8.08	Gajner Rd. Butta Well	15	Safety Kit (5 nos)	8.30 am	5.00pm
11.8.08	Gajner Rd. 4 No. Dispensary	12	Safety Kit (5 nos)	9.00 am	5.30pm

12.8.08	Gajner Rd. Nr. Dr. Avinash Kalla House	18	Safety Kit (5 nos)	9.00 am	5.30pm
12.8.08	Mukta Prasad Rd.Nr.Pandit Dharam Kanta	14	Safety Kit (5 nos)	9.00 am	5.30pm
12.8.08	Mukta Prasad Rd.Nr.Manoj Dal Mill.	17	Safety Kit (5 nos)	9.00 am	5.30pm
12.8.08	Gajner Rd. Nr. Sangam Marbal Shop	9	Safety Kit (5 nos)	9.00 am	5.30pm
14.8.08	Gajner Rd. Nr. Kothari Hospital	12	Safety Kit (5 nos)	9.00 am	5.30pm
14.8.08	Gajner Rd. / Pogal Phata.	14	Safety Kit (5 nos)	9.00 am	5.30pm
14.8.08	Pogal Rd.Makhan Bhog.	15	Safety Kit (5 nos)	8.40 am	5.00pm
14.8.08	Mukta Prasad Rd.Moti Maharaj	10	Safety Kit (5 nos)	8.40 am	5.00pm
15.8.08	Mukta Prasad Rd.Nr.Liyakat Ji ka Koyale Ka Bada	8	Safety Kit (5 nos)	8.40 am	5.00pm
15.8.08	Gajner Rd. Nr. Chungi Chauki.	20	Safety Kit (5 nos)	8.40 am	5.00pm
15.8.08	Pogal Rd. Nathusar Gate, Govt H.School	19	Safety Kit (5 nos)	8.40 am	5.00pm
15.8.08	Pogal Rd. Nr.Shivshakti Prov. Store	15	Safety Kit (5 nos)	8.30 am	5.00pm
16.8.08	Gajner Rd., Infront of Trust.	17	Safety Kit (5 nos)	8.30 am	5.00pm
16.8.08	Medical College Chauraha	14	Safety Kit (5 nos)	8.30 am	5.00pm
16.8.08	Pawanpuri Rd. Infront of Bikaner Nursing Home	21	Safety Kit (5 nos)	8.30 am	5.00pm
16.8.08	Rani Bzr. - 2.	25	Safety Kit (5 nos)	8.00 am	5.00pm
18.8.08	Dhanpat koche, Shadulganj.	14	Safety Kit (5 nos)	8.30 am	5.00pm
18.8.08	Nr. H. No. B-124, Shadul Ganj	12	Safety Kit (5 nos)	8.00 am	5.30pm
18.8.08	Puran Singh Circle, Bhraman Path	18	Safety Kit (5 nos)	9.00 am	5.30pm
18.8.08	Puran Singh Circle, Bhraman Path	20	Safety Kit (5 nos)	9.00 am	5.30pm
19.8.08	Nr. H. No. 149, Medical Shop, Shadul Ganj.	16	Safety Kit (5 nos)	8.40 am	5.00pm

19.8.08	Nr. H. No. A-23, Shadul Ganj.	18	Safety Kit (5 nos)	8.00 am	5.00pm
19.8.08	Nr. H. No. A-42, Shadul Ganj.	19	Safety Kit (5 nos)	8.30 am	5.00pm
19.8.08	Nr. H. No. C-77, Rotary Club, Shadul Ganj.	8	Safety Kit (5 nos)	8.00 am	5.30pm
20.8.08	Nr. H. No. C-3, Shadul Ganj.	21	Safety Kit (5 nos)	9.00 am	5.30pm
20.8.08	Nr. H. No. C-43, Shiv Bhikaji Park, Shadul Ganj.	10	Safety Kit (5 nos)	9.00 am	5.30pm
20.8.08	Nr. Shivam Hotel, Shadul Ganj.	11	Safety Kit (5 nos)	8.40 am	5.00pm
21.8.08	Nr. Nifa, Shadul Ganj.	15	Safety Kit (5 nos)	8.00 am	5.30pm
21.8.08	Nr. Chankya Hotel, Shadul Ganj.	12	Safety Kit (5 nos)	8.00 am	5.30pm
21.8.08	J.N.V. Mahila Polytechnical College	18	Safety Kit (5 nos)	8.00 am	5.30pm
21.8.08	Infront of Gandhi Park	14	Safety Kit (5 nos)	8.00 am	5.30pm
23.8.08	Nr. Central Bank of Rajasthan, Karni Ngr. Branch	17	Safety Kit (5 nos)	9.00 am	5.30pm
23.8.08	Nr. H. No. A-249, Karni Ngr.	9	Safety Kit (5 nos)	8.40 am	5.00pm
23.8.08	Bapu Colony	12	Safety Kit (5 nos)	8.40 am	5.00pm
23.8.08	Nr. H. No. 27A, Gandhi Ngr.	14	Safety Kit (5 nos)	8.40 am	5.00pm
23.8.08	Nr. Water Box Office, Dunger College Rd.	15	Safety Kit (5 nos)	8.40 am	5.00pm
23.8.08	Nr. Adarsh Vidya Mandir, J.N.V. Colony.	10	Safety Kit (5 nos)	8.00 am	5.30pm
23.8.08	Nr. H. No. IV - D - 106, J.N.V. Colony.	8	Safety Kit (5 nos)	8.00 am	5.30pm
24.8.08	Nr. H. No. IV - E - 437, J.N.V. Colony.	20	Safety Kit (5 nos)	8.00 am	5.30pm
24.8.08	Infront of Jaswant Milk Bhandar, Hemu Colony Circle	19	Safety Kit (5 nos)	8.00 am	5.30pm
24.8.08	Nr. H. No. C-130, Kaswa Milk Center, J.N.V. Colony	15	Safety Kit (5 nos)	9.00 am	5.30pm
25.8.08	Nr. H. No. I - D - 48, J.N.V. Colony.	17	Safety Kit (5 nos)	9.00 am	5.30pm

25.8.08	Nr. H. No. V - B - 16, Bishnoi Floor Mill, J.N.V. Colony.	14	Safety Kit (5 nos)	9.00 am	5.30pm
25.8.08	Vyas Colony Circle, J.N.V. Colony.	21	Safety Kit (5 nos)	9.00 am	5.30pm
25.8.08	Nr. H. No. V - C- 130, J.N.V.Colony.	25	Safety Kit (5 nos)	8.40 am	5.00pm
25.8.08	Nr. H. No. V - C- 176, J.N.V.Colony.	14	Safety Kit (5 nos)	8.40 am	5.00pm
26.8.08	Nr. H. No. V - D - 12, J.N.V.Colony.	12	Safety Kit (5 nos)	8.40 am	5.00pm
26.8.08	J.N.Vyas Colony Circle, Golchakkar Market	18	Safety Kit (5 nos)	8.00 am	5.00pm
26.8.08	Nr. H. No. I - D - 33, J.N.V. Colony.	20	Safety Kit (5 nos)	8.30 am	5.00pm
26.8.08	Nr. H. No. I - E - 91, J.N.V. Colony.	16	Safety Kit (5 nos)	8.00 am	5.30pm
27.8.08	Nr. H. No. I - E - 170, J.N.V. Colony.	18	Safety Kit (5 nos)	9.00 am	5.30pm
27.8.08	Nr. Agrarwal Chetana Sameeti, J.N.V. Colony.	19	Safety Kit (5 nos)	9.00 am	5.30pm
27.8.08	Nr. H. No. I - E - 184, J.N.V. Colony.	8	Safety Kit (5 nos)	8.40 am	5.00pm
27.8.08	Nr. H. No. I - D - 16, J.N.V. Colony.	21	Safety Kit (5 nos)	8.30 am	5.00pm
29.8.08	Nr. H. No. IV - E - 81,Nr Shiva Temple, J.N.V.Colony.	10	Safety Kit (5 nos)	8.30 am	5.00pm
29.8.08	Nr. Jesus & Merry Sec. School, J.N.V. Colony	11	Safety Kit (5 nos)	8.30 am	5.00pm
29.8.08	Nr. H. No. II - B - 18, J.N.V. Colony.	15	Safety Kit (5 nos)	8.30 am	5.00pm
30.8.08	Nr. H. No. V - D- 66, J.N.V.Colony.	12	Safety Kit (5 nos)	8.30 am	5.00pm
30.8.08	Nr. H. No. VI - A- 22, J.N.V.Colony.	18	Safety Kit (5 nos)	8.30 am	5.00pm
30.8.08	Nr. H. No. VI - A- 22, J.N.V.Colony.	14	Safety Kit (5 nos)	8.30 am	5.00pm
31.8.08	Nr. H. No. VI - C- 92, J.N.V.Colony.	17	Safety Kit (5 nos)	9.00 am	5.30pm
31.8.08	Nr. H. No. V - D - 182, J.N.V.Colony.	9	Safety Kit (5 nos)	9.00 am	5.30pm
31.8.08	Nr. H. No. VIII - B - 21, J.N.V.Colony.	12	Safety Kit (5 nos)	9.00 am	5.30pm

31.8.08	Nr. H. No. V - D - 190, J.N.V.Colony.	14	Safety Kit (5 nos)	9.00 am	5.30pm
1.9.08	Nr. H. No. VI - B- 63,Tandan Farm House, J.N.V.Colony.	15	Safety Kit (5 nos)	9.00 am	5.30pm
1.9.08	Nr. H. No. VII - A - 13, J.N.V.Colony.	10	Safety Kit (5 nos)	9.00 am	5.30pm
1.9.08	Nr. H. No. VII - C - 18, J.N.V.Colony.	8	Safety Kit (5 nos)	9.00 am	5.30pm
2.9.08	Nr. H. No. VI - B - 10, J.N.V.Colony.	20	Safety Kit (5 nos)	8.30 am	5.00pm
2.9.08	Nr. Naveen Shiksha Niketan school, Patel Ngr.	19	Safety Kit (5 nos)	8.30 am	5.00pm
2.9.08	Nr. H. No. III - K - 15, Pawanpuri.	15	Safety Kit (5 nos)	8.30 am	5.00pm
3.9.08	Nr. Relience Fresh Shop, Pawan Puri.	17	Safety Kit (5 nos)	9.00 am	5.30pm
3.9.08	Nr.Champalal Jewellers Shop, H.No.77APawan Puri.	14	Safety Kit (5 nos)	9.00 am	5.30pm
3.9.08	Shani Mandir Chauraha, Pawan Puri.	21	Safety Kit (5 nos)	9.00 am	5.30pm
3.9.08	Nr. Nagnichi Temple/ Jog- Sanjog Banblow Sudershana Ngr.	25	Safety Kit (5 nos)	9.00 am	5.30pm
4.9.08	Infront of Karni Water Pump, Sudershana Ngr.	14	Safety Kit (5 nos)	9.00 am	5.30pm
4.9.08	Infront of H. No. III - B - 33, Pawan Puri	12	Safety Kit (5 nos)	9.00 am	5.30pm
4.9.08	Infront of Universal Jimnanyism, Marudhar Ngr.	18	Safety Kit (5 nos)	9.00 am	5.30pm
5.9.08	Infront of Champalal Jewellers, Pawan Puri.	20	Safety Kit (5 nos)	9.00 am	5.30pm
5.9.08	Infront of Laxmi Bilders, Sudershana Ngr.	16	Safety Kit (5 nos)	9.00 am	5.30pm
5.9.08	Infront of Samudaik Vivah Sthal, Pawan Puri.	18	Safety Kit (5 nos)	9.00 am	5.30pm
5.9.08	Nr.Prodyugik & Vigyan Bhavan, Marudhar Ngr.	19	Safety Kit (5 nos)	9.00 am	5.30pm
7.9.08	Nr. H. No. 192, Rasmdev Baba Temple, Marudhar Ngr.	8	Safety Kit (5 nos)	9.00 am	5.30pm
7.9.08	Nr. H. No. I - S - 4 Pawan Puri	21	Safety Kit (5 nos)	9.00 am	5.30pm
7.9.08	Nr. Floor Mill, Vinoba Vasti.	10	Safety Kit (5 nos)	9.00 am	5.30pm

8.9.08	Swamiyon ka Mohalla	11	Safety Kit (5 nos)	9.00 am	5.30pm
8.9.08	Nr. Rly. Crossing, Chaukudi Fatak	15	Safety Kit (5 nos)	9.00 am	5.30pm
8.9.08	Nr. BMC Store, Chaukudi Fatak Rd.(Old Gajner Rd.)	12	Safety Kit (5 nos)	9.00 am	5.30pm
8.9.08	Nr. Chaukudi Fatak Nala	18	Safety Kit (5 nos)	9.00 am	5.30pm
10.9.08	Nr. Modi Nivas, Ranewardas.	14	Safety Kit (5 nos)	9.00 am	5.30pm
10.9.08	Nr. Vinoba Vasti Play Ground	17	Safety Kit (5 nos)	9.00 am	5.30pm
10.9.08	Kuchil Pura chauk	9	Safety Kit (5 nos)	9.00 am	5.30pm
10.9.08	Nr. Pawasar Kuwan, Ramdev Baba Temple	12	Safety Kit (5 nos)	9.00 am	5.30pm
11.9.08	Nr. Pink Modern School,Opp.Bhaskar Office.	14	Safety Kit (5 nos)	9.00 am	5.30pm
11.9.08	Kuchil Pura , Nr. MainBranch Post Office (H.O)	15	Safety Kit (5 nos)	9.00 am	5.30pm
11.9.08	Nr. Ratan Bihari Garden, K.M. Rd.	10	Safety Kit (5 nos)	9.00 am	5.30pm
12.9.08	Fad Bzr. Chauraha.	8	Safety Kit (5 nos)	9.00 am	5.30pm
12.9.08	Infront of Panch Mukhi Hanuman Temple & Bhaskar Office.	20	Safety Kit (5 nos)	9.00 am	5.30pm
12.9.08	Nr. Kesaria Hanuman Temple.	19	Safety Kit (5 nos)	9.00 am	5.30pm
12.9.08	Nr. Roshani Ghar Chauraha.	15	Safety Kit (5 nos)	9.00 am	5.30pm
13.9.08	Nr. Karni Nivas, Bagwanoka Mohalla.	17	Safety Kit (5 nos)	9.00 am	5.30pm
13.9.08	Infront of Bagwan Volly Ball Club.	14	Safety Kit (5 nos)	9.00 am	5.30pm
14.9.08	Nr. Suraj Nivas, Police Line.	21	Safety Kit (5 nos)	9.00 am	5.30pm
15.9.08	Infront of Gehlot Tent House, Gajner Rd.	25	Safety Kit (5 nos)	9.00 am	5.30pm

15.9.08	Nr. Bhajan Dairy	14	Safety Kit (5 nos)	9.00 am	5.30pm
17.9.08	Nr. Ramdev Baba Temple Samder House.	12	Safety Kit (5 nos)	9.00 am	5.30pm
18.9.08	Infront of Rastradoot Printing Press	18	Safety Kit (5 nos)	9.00 am	5.30pm
19.9.08	Infront of Bikaner Municipal Corporation	20	Safety Kit (5 nos)	9.00 am	5.30pm
20.9.08	Infront of Sheetal Mata Temple, Nr Adult Education Asso.	16	Safety Kit (5 nos)	9.00 am	5.30pm
21.9.08	Subhash Pura, Nr. Mata Temple.	18	Safety Kit (5 nos)	9.00 am	5.30pm
23.9.08	Infront of Lal Quarter, Shubhash Pura	19	Safety Kit (5 nos)	9.00 am	5.30pm
24.9.08	Infront of Vijaya bank, amarsingh Pura	8	Safety Kit (5 nos)	9.00 am	5.30pm
25.9.08	Nr.Raj Vilas Hotel & State Bank of Jaipur & Bikaner (H.O)	21	Safety Kit (5 nos)	9.00 am	5.30pm
26.9.08	Subhash Pura, Nr. Hanuman Temple Lane,Kabrasthan.	10	Safety Kit (5 nos)	9.00 am	5.30pm
27.9.08	Infront of M.S.College, Nr. Taxi Company	11	Safety Kit (5 nos)	9.00 am	5.30pm
28.9.08	Nr. Bikaner Press, Bikaner Press Rd.	15	Safety Kit (5 nos)	9.00 am	5.30pm
29.9.08	Nr. Collectrate Office	12	Safety Kit (5 nos)	9.00 am	5.30pm
30.9.08	Bhagat singh chauk, Amersingh Pura	18	Safety Kit (5 nos)	9.00 am	5.30pm
1.10.08	Infront of Chunnilal Garden, Nr. Bikaner Press	14	Safety Kit (5 nos)	9.00 am	5.30pm
3.10.08	Nr. Urmul Dairy, Indira Colony	17	Safety Kit (5 nos)	9.00 am	5.30pm
4.10.08	Nr. Shekhvat Floor Mill, Indira Colony	9	Safety Kit (5 nos)	9.00 am	5.30pm
5.10.08	Nr. Ek Tang Ka Transformer, Indira Colony	12	Safety Kit (5 nos)	9.00 am	5.30pm
6.10.08	Nr. Karni Provision Store, Indira Colony	14	Safety Kit (5 nos)	9.00 am	5.30pm
7.10.08	Nr. Madjid, Indira Colony	15	Safety Kit (5 nos)	9.00 am	5.30pm

8.10.08	Nr. U.I.T. Park, Indira Colony	10	Safety Kit (5 nos)	9.00 am	5.30pm
9.10.08	Fatti Pura, Indira Colony	8	Safety Kit (5 nos)	9.00 am	5.30pm
10.10.08	Opp. F.C.I.Godown, Indira Colony	20	Safety Kit (5 nos)	9.00 am	5.30pm
11.10.08	Shri. Seetaram Gate	19	Safety Kit (5 nos)	9.00 am	5.30pm
12.10.08	Nr. Jassusar Gate	15	Safety Kit (5 nos)	9.00 am	5.30pm
13.10.08	Devisingh Bhati Rd. Old Gajner Rd.	17	Safety Kit (5 nos)	9.00 am	5.30pm
14.10.08	Infront of Rangolai Bhavan, Jawahar Ngr.	14	Safety Kit (5 nos)	9.00 am	5.30pm
15.10.08	Nr. Chandak Bhavan, Devisingh Bhati	21	Safety Kit (5 nos)	9.00 am	5.30pm
16.10.08	Maggaram Colony, Opp.Kothari Hospital	25	Safety Kit (5 nos)	9.00 am	5.30pm
17.10.08	Nr. Avinash Enterprises, Maggaram Colony.	14	Safety Kit (5 nos)	9.00 am	5.30pm
18.10.08	Nr. Rakawat Bhavan, Jassusar Gate.	12	Safety Kit (5 nos)	9.00 am	5.30pm
19.10.08	Nr. H. No. F782, Muralidhar Colony	18	Safety Kit (5 nos)	9.00 am	5.30pm
21.10.08	Infront of Rajasthan Language & Sahitya Cilture Acadamy.	20	Safety Kit (5 nos)	9.00 am	5.30pm
22.10.08	Nr. M.M.Ground, Muralidhar /Nathusar Gate Rd.	16	Safety Kit (5 nos)	9.00 am	5.30pm
23.10.08	Nr. Nathusar Bas.	18	Safety Kit (5 nos)	9.00 am	5.30pm
24.10.08	Nr. Asha Garment, Nathusar Bas.	19	Safety Kit (5 nos)	9.00 am	5.30pm
25.10.08	Nr. Cycle Repairing Shop. Muralidhar Colony.	8	Safety Kit (5 nos)	9.00 am	5.30pm
26.10.08	Infront of H. No. C-223, Seeta Vatika, Muralidhar Colony.	21	Safety Kit (5 nos)	9.00 am	5.30pm
27.10.08	Infront of H. No. D -633 , Muralidhar Colony.	10	Safety Kit (5 nos)	9.00 am	5.30pm
28.10.08	Infront of H. No. C-55, Muralidhar Colony.	11	Safety Kit (5 nos)	9.00 am	5.30pm
29.10.08	Infront of H. No. D -182, Muralidhar Colony.	15	Safety Kit (5 nos)	9.00 am	5.30pm

30.10.08	Infront of H. No. B2A, Muralidhar Colony.	12	Safety Kit (5 nos)	9.00 am	5.30pm
1.11.08	Opp. Goluji I Bagichee.Nr Fire Station Murlidhar Colony.	18	Safety Kit (5 nos)	9.00 am	5.30pm
2.11.08	DRM Circle. Nr. Chautina Kuwan.	14	Safety Kit (5 nos)	9.00 am	5.30pm
3.11.08	Infront of Shri Vishwanath Sanyas Ashram	17	Safety Kit (5 nos)	9.00 am	5.30pm
4.11.08	Infront of H. No. A-147, Antyoday Ngr.	9	Safety Kit (5 nos)	9.00 am	5.30pm
5.11.08	Infront of Tanwar Bilders, Antyoday Ngr.	12	Safety Kit (5 nos)	9.00 am	5.30pm
6.11.08	Infront of H. No. C-64, Antyoday Ngr.	14	Safety Kit (5 nos)	9.00 am	5.30pm
8.11.08	Nr. Kanji Ki Shop. Jawahar Ngr.	15	Safety Kit (5 nos)	9.00 am	5.30pm
9.11.08	Infront of Gulabi Manjil, Sarvoday Basti,	10	Safety Kit (5 nos)	9.00 am	5.30pm
12.11.08	Nr. Sabjeewala, Muktaprasad Rd.	8	Safety Kit (5 nos)	9.00 am	5.30pm
13.11.08	Infront of Balaji Tifin Center, Muktaprasad Rd.	20	Safety Kit (5 nos)	9.00 am	5.30pm
14.11.08	Infront of sawaraseth Milk Center.	19	Safety Kit (5 nos)	9.00 am	5.30pm
15.11.08	Rampura, Opp. B.S.M. Academy	15	Safety Kit (5 nos)	9.00 am	5.30pm
16.11.08	Rampura, Nr. Railway Yard.	17	Safety Kit (5 nos)	9.00 am	5.30pm
17.11.08	Rampura, Infront of Raju Ki Floor Mill.	14	Safety Kit (5 nos)	9.00 am	5.30pm
18.11.08	Rampura, Nr. Gali No. 7 Bhure Khan Patti.	21	Safety Kit (5 nos)	9.00 am	5.30pm
19.11.08	Rampura, Nr. Lalgah Madjid	25	Safety Kit (5 nos)	9.00 am	5.30pm
20.11.08	Rampura, Double Storage Qurter, Muktaprasad Rd.	14	Safety Kit (5 nos)	9.00 am	5.30pm
21.11.08	Nr. Balaji Tifin Center, Muktaprasad Rd.	12	Safety Kit (5 nos)	9.00 am	5.30pm
22.11.08	Rampura, Gali No. 20	18	Safety Kit (5 nos)	9.00 am	5.30pm

25.11.08	Infront of B.S.M. Acadamy	20	Safety Kit (5 nos)	9.00 am	5.30pm
27.11.08	Rampura, Nr. Shekhawat Provision Store, A1/2	16	Safety Kit (5 nos)	9.00 am	5.30pm
28.11.08	Nr. Raj. Co-Operative Dairy Federatio Ltd. Rampura	18	Safety Kit (5 nos)	9.00 am	5.30pm
29.11.08	Rampura, Infront of Baba Ramdev Temple, Muktaprasad Rd.	19	Safety Kit (5 nos)	9.00 am	5.30pm
30.11.08	Rampura, Gali No.5, Nr. Gaurav Provision Store	8	Safety Kit (5 nos)	9.00 am	5.30pm
1.12.08	Rani Bzr. Chauk, Nr. Samsung Showroom.	21	Safety Kit (5 nos)	9.00 am	5.30pm
2.12.08	Bandravas, Nr. Sanatan Ayurved Govt. Hospital	10	Safety Kit (5 nos)	9.00 am	5.30pm
3.12.08	Bandravas, Gogagate.	11	Safety Kit (5 nos)	9.00 am	5.30pm
4.12.08	Nokha Rd. Nr. Jain College.	15	Safety Kit (5 nos)	9.00 am	5.30pm
4.12.08	Nr. Suraj Theator, Rani Bzr.	12	Safety Kit (5 nos)	9.00 am	5.30pm
4.12.08	Ratan Sagar Kuwan	18	Safety Kit (5 nos)	9.00 am	5.30pm
6.12.08	Fad Bzr. Sabjee Mandi.	14	Safety Kit (5 nos)	9.00 am	5.30pm
6.12.08	Fad Bzr. Infront of Laxmi Plaza.	17	Safety Kit (5 nos)	9.00 am	5.30pm
7.12.08	Valmiki Basti, Nr. Samudaik Bhavan	9	Safety Kit (5 nos)	9.00 am	5.30pm
7.12.08	Kamla Colony, Nr. BMC Store.	12	Safety Kit (5 nos)	9.00 am	5.30pm
7.12.08	Nathu Ki Tal.	14	Safety Kit (5 nos)	9.00 am	5.30pm
8.12.08	Vinoba Vasti, Nr. BMC Store.	15	Safety Kit (5 nos)	9.00 am	5.30pm
8.12.08	Talisar, Nr. Bhairu Ji Temple lane.	10	Safety Kit (5 nos)	9.00 am	5.30pm
9.12.08	Koyala Gali.	8	Safety Kit (5 nos)	9.00 am	5.30pm

9.12.08	Alakh Sagar Kuwan	20	Safety Kit (5 nos)	9.00 am	5.30pm
9.12.08	Infront of Bothara Comlex.	19	Safety Kit (5 nos)	9.00 am	5.30pm
10.12.08	Chautina Kuwan.	15	Safety Kit (5 nos)	9.00 am	5.30pm
10.12.08	Nr. Honey Ice Cream Parlour, Sohan Kothi.	17	Safety Kit (5 nos)	9.00 am	5.30pm
11.12.08	Nr. Punjab Tent House, Rani Bzr.	14	Safety Kit (5 nos)	9.00 am	5.30pm
11.12.08	Nr. Parshwanath Juise Center, Ambedkar Circle.	21	Safety Kit (5 nos)	9.00 am	5.30pm
11.12.08	Nr. New India Insurance Co., Shadul Colony	25	Safety Kit (5 nos)	9.00 am	5.30pm
12.12.08	Amarsar Kuwan, Shadul Colony	14	Safety Kit (5 nos)	9.00 am	5.30pm
12.12.08	Infront of Karni Arms Amulation, Shadul Colony	12	Safety Kit (5 nos)	9.00 am	5.30pm
12.12.08	Nr. PBM Hospital Taxi Stand	18	Safety Kit (5 nos)	9.00 am	5.30pm
13.12.08	Nr. Rly Crossing, Chaukudi Fatak, Infront of BabaRamdev Temple	20	Safety Kit (5 nos)	9.00 am	5.30pm
13.12.08	Nr. Punjabi Nut Bolt Hotel, Adarsh Colony.	16	Safety Kit (5 nos)	9.00 am	5.30pm
13.12.08	Nr. Tulsidas Circle, Modern Market Lane	18	Safety Kit (5 nos)	9.00 am	5.30pm
14.12.08	Nr. Manmohan School, Antyoday Ngr.	19	Safety Kit (5 nos)	9.00 am	5.30pm
14.12.08	Infront of Shri Ram Temple, M.M.Ground	8	Safety Kit (5 nos)	9.00 am	5.30pm
14.12.08	Infront of Shashi Sharma House. Opp.Kothari Hospital	21	Safety Kit (5 nos)	9.00 am	5.30pm
14.12.08	Nr. Anwar Floor Mill, Opp. Chungi Chauki	10	Safety Kit (5 nos)	9.00 am	5.30pm
15.12.08	Opp. Baghchan FCI Godown, Antyoday Ngr.	11	Safety Kit (5 nos)	9.00 am	5.30pm
15.12.08	Nr. Sunil General Store, Antyoday Ngr.	15	Safety Kit (5 nos)	9.00 am	5.30pm
15.12.08	Gaushala, Nr. Survoday Ngr.	12	Safety Kit (5 nos)	9.00 am	5.30pm
15.12.08	Hanuman Hatha, Opp. Govt. Press	18	Safety Kit (5 nos)	9.00 am	5.30pm

16.12.08	Nr. Hanuman Temple, Hasan Trust.	14	Safety Kit (5 nos)	9.00 am	5.30pm
16.12.08	Nr. Income Tax Office, Station Rd.	17	Safety Kit (5 nos)	9.00 am	5.30pm
16.12.08	Nr. Agrawal School, Opp. Nagar Nigam	9	Safety Kit (5 nos)	9.00 am	5.30pm
16.12.08	Bhutto Ka Bas, Infront of Modern Defence School	12	Safety Kit (5 nos)	9.00 am	5.30pm
17.12.08	Hanuman Hatha, Nr. Shiv Shankar Temple.	14	Safety Kit (5 nos)	9.00 am	5.30pm
17.12.08	Inside Police Line,	15	Safety Kit (5 nos)	9.00 am	5.30pm
17.12.08	Infront of Fort School, Station Rd., Court Gate.	10	Safety Kit (5 nos)	9.00 am	5.30pm
17.12.08	Lal Quarter, M.D.V. Colony	8	Safety Kit (5 nos)	9.00 am	5.30pm
17.12.08	Nr. Kripal Bhairu Ji Temple, Sarvoday Vasti	20	Safety Kit (5 nos)	9.00 am	5.30pm
18.12.08	Gali No.17, Rampura	19	Safety Kit (5 nos)	9.00 am	5.30pm
18.12.08	Nr. Bhadu STD, Opp. Dudi Petrol Pump, Antyoday Ngr.	15	Safety Kit (5 nos)	9.00 am	5.30pm
18.12.08	Nr. Gurudwara, Rampura	17	Safety Kit (5 nos)	9.00 am	5.30pm
18.12.08	Nr. Chatta Factory, Rampura	14	Safety Kit (5 nos)	9.00 am	5.30pm
18.12.08	Dhan Mandi, Nr. Kisan Bhavan	21	Safety Kit (5 nos)	9.00 am	5.30pm
19.12.08	Infront of Sales Tax Office, Shadul Colony	25	Safety Kit (5 nos)	9.00 am	5.30pm
19.12.08	Nr. Arora Medical Store, Shastri Ngr.	14	Safety Kit (5 nos)	9.00 am	5.30pm
19.12.08	Nr. Tulsidas Hospital, Shastri Ngr. Duplex Colony.	12	Safety Kit (5 nos)	9.00 am	5.30pm
19.12.08	Nr. Chopra Katla, Rani Bzr.	18	Safety Kit (5 nos)	9.00 am	5.30pm
19.12.08	Opp. Ram Temple, Ind Area, Rani Bzr.	20	Safety Kit (5 nos)	9.00 am	5.30pm
20.12.08	Infront of Lucky Model School, Ind Area, Rani Bzr.	16	Safety Kit (5 nos)	9.00 am	5.30pm
20.12.08	Infront of Vikas Sonography Center,Shadul Colony	18	Safety Kit (5 nos)	9.00 am	5.30pm

20.12.08	Nr. Rawat Hospital, Duplex Colony, Shastri Ngr.	19	Safety Kit (5 nos)	9.00 am	5.30pm
21.12.08	Opp. Suraj Theater, Nr. Kothari Palace	8	Safety Kit (5 nos)	9.00 am	5.30pm
21.12.08	Nr. Bengali School, ind Area, Rani Bzr.	21	Safety Kit (5 nos)	9.00 am	5.30pm
21.12.08	Kali Mata Chauk, Ind. Area, Rani Bzr.	10	Safety Kit (5 nos)	9.00 am	5.30pm
22.12.08	Nr. Surana & Company, Ind Area, Rani Bzr.	11	Safety Kit (5 nos)	9.00 am	5.30pm
22.12.08	Inside Naval Sagar Kuwan	15	Safety Kit (5 nos)	9.00 am	5.30pm
22.12.08	Inside Jailwell Substation, Rani Bzr.	12	Safety Kit (5 nos)	9.00 am	5.30pm
23.12.08	Nr. Gujjar Kabrasthan, Ind Area, Rani Bzr.	18	Safety Kit (5 nos)	9.00 am	5.30pm
23.12.08	Opp. Panch Mukhi Hanuman Temple, Ind Area, Rani Bzr.	14	Safety Kit (5 nos)	9.00 am	5.30pm
23.12.08	Nr. Usman House, Harijan Vasti, Ind Area, Rani Bzr.	17	Safety Kit (5 nos)	9.00 am	5.30pm
24.12.08	Inside Jailwell Substation,Nr. Peshab Ghar. Rani Bzr.	9	Safety Kit (5 nos)	9.00 am	5.30pm
24.12.08	Tyagi Vatika, Rani Bzr.	12	Safety Kit (5 nos)	9.00 am	5.30pm
24.12.08	Bidasar Badi, Gangashaher Rd.	14	Safety Kit (5 nos)	9.00 am	5.30pm
26.12.08	Infront of Sand Bhavan, Ganga Shaher Rd.	15	Safety Kit (5 nos)	9.00 am	5.30pm
26.12.08	Nr. Baginada Hanuman Temple, Bandravas.	10	Safety Kit (5 nos)	9.00 am	5.30pm
26.12.08	Sonaron Ki Bagichi	8	Safety Kit (5 nos)	9.00 am	5.30pm
26.12.08	Nr. Khaturiya House, Rani Bzr.	20	Safety Kit (5 nos)	9.00 am	5.30pm
27.12.08	Nr. Bhavani Hotel, Ganga Shaher Rd.	19	Safety Kit (5 nos)	9.00 am	5.30pm
27.12.08	Vakilowali Gali, Chautina Kuwan.	15	Safety Kit (5 nos)	9.00 am	5.30pm
27.12.08	Inside Chautina Kuwan Sub Station	17	Safety Kit (5 nos)	9.00 am	5.30pm
28.12.08	Nr. Soda Corporator House, Chautina Kuwan.	14	Safety Kit (5 nos)	9.00 am	5.30pm

28.12.08	Nr. Pashu Chikitchalaya, Patel Ngr.	21	Safety Kit (5 nos)	9.00 am	5.30pm
28.12.08	Infront of Womens I.T.I Hostel, Nr.Heeramoti Fertiliser.	25	Safety Kit (5 nos)	9.00 am	5.30pm
28.12.08	Nr. Ishika Butik, H.No. 4-A-1, Pawanpuri.	14	Safety Kit (5 nos)	9.00 am	5.30pm
29.12.08	Nr. H. No. A-93,Infront of Karni Jewellers, Pawanpuri.	12	Safety Kit (5 nos)	9.00 am	5.30pm
29.12.08	Nr. H. No. 3-D-92, Nr. Krishna Hair Dressers.	18	Safety Kit (5 nos)	9.00 am	5.30pm
29.12.08	G.A.D. Quarter, Pawanpuri	20	Safety Kit (5 nos)	9.00 am	5.30pm
30.12.08	G.A.D. Quarter, Pawanpuri	16	Safety Kit (5 nos)	9.00 am	5.30pm
30.12.08	Nr. Bhavana Provision Store, Marudhar Colony.	18	Safety Kit (5 nos)	9.00 am	5.30pm
30.12.08	Khan Colony, Nr. Rly. Crossing Marudhar Colony Rd.	19	Safety Kit (5 nos)	9.00 am	5.30pm
30.12.08	Ganga Ngr. Rd. Nr. Maruti Showroom.	8	Safety Kit (5 nos)	9.00 am	5.30pm
31.12.08	Samata Ngr. Opp. Maruti Showroom, Ganga Ngr. Rd.	21	Safety Kit (5 nos)	9.00 am	5.30pm
31.12.08	Adarsh Ngr. Colony	10	Safety Kit (5 nos)	9.00 am	5.30pm
31.12.08	Ranesar Bas, Behind Chandani Hotel	11	Safety Kit (5 nos)	9.00 am	5.30pm
31.12.08	Tirthrum	15	Safety Kit (5 nos)	9.00 am	5.30pm

Site In charge -----

Date	Technician Name	Issue Date
1-	Shyam lal	1/1/09
2-	Abdual Rauf Khan	1/1/09
3-	Mayank Pareek	1/1/09

6. INSTALLATIONS AND REMOVAL OF ELECTRIC POLES:

The nature of work involves only removal of old streetlight fittings & installation of new fittings. We do not remove any electric poles; no digging work is involved during the course of the work.

The nature of our work , removal of old fittings & replacement with new energy saving fittings does not affect the lighting at night for any areas including local cultural areas, as the work is completed only during the daytime.