

Asian Electronics Ltd
ESCO Project Division

ENVIRONMENTAL MANUAL
FOR ENERGY SAVING
STREETLIGHTING PROJECT
FOR
ALWAR MUNICIPAL COUNCIL

Prepared By :
Asian Electronics Ltd.
Esco - Project Division
68, MIDC, Satpur, Nashik- 422007
Ph.: +91-253-2365000, Fax: +91-253-2365010
E-mail: aeltha@vsnl.com, URL: www.aelgroup.com

TABLE OF CONTENTS

NO.	TITLE	PG.NO.
1.	1.1 EXECUTIVE SUMMARY	3
	1.2 PROJECT OVERVIEW & DESCRIPTION OF THE PROJECT ACTIVITY	4
2.	DESCRIPTION OF PROJECT AREAS	8
	2.1 Alwar City Plan	9
3.	PROJECT IMPACTS AND MITIGATION OF IMPACTS	10
	3.1 Short term Impacts & Mitigation	10
	3.2 Long term Impacts & Mitigation	11
4.	PROPOSED PLAN OF ACTION FOR PROJECT ON ENVIRONMENTAL ASPECTS	12
	4.1 Handling / Storing of used / damaged light bulbs	12
	4.2 Flow Chart showing Co-ordination at site	13
	4.3 Removed fittings and lamps records	14
	4.4 Lamps failed during O&M period	16
	4.5 Replacement of Lamp record during maintenance	17
5.	SAFETY OF WORKERS	19
	5.1 Safety Measures for street lighting Installation & Maintenance	19
	5.2 First Aid	20
	5.3 Safety guidelines for workmen	21
	5.4 Safety devices and tools	21
	5.5 Safety kit distribution record	22
6.	INSTALLATION AND REMOVAL OF ELECTRIC POLES	23

1.1 EXECUTIVE SUMMARY

The existing HPSV & HPMV fixtures that light the roads are provided by the multi company and do not light the walkway sufficiently enough to meet Council safety standards .

In support of the much required energy conservation measures the Municipal Council of Alwar, decided to replace old Sodium Vapor & FTL lamps with new T-5 energy saving street lighting fixtures in entire city.

No significant long-term losses or impacts to resources are anticipated with this project.

While this project will be located near historic structures, no structures or other historic resources are expected to be significantly impacted.

Disturbance of existing trees and shrubs will be avoided. Impacts to vehicle traffic in the area are expected to be moderate during installation and care already had been taken for that.

The directions of traffic flow through the site during installation were coordinated with the City of Alwar. After completion, there will be no vehicle traffic impacts.

The proposed project will not generate significant demands on natural resources of the immediate or surrounding area.

This area is also not a significant wildlife habitat as it consists of paved streets and walkways, and lawn and landscaped areas.

AEL will incorporate the Commonwealth's pollution prevention policies in the construction of this project. During construction, the contractor will take the necessary measures to limit the short-term impacts. This will include noise, storm water, sediment, and erosion controls. The disposal of any hazardous wastes generated is managed by AEL and/or its subcontractors in compliance with pertinent Municipal and State regulations.

1.2 PROJECT OVERVIEW & DESCRIPTION OF THE PROJECT ACTIVITY:

The purpose of the project activity is to implement street lighting improvements as a Demand-side Management (DSM) strategy to save electricity consumption and reduce municipalities' energy budget using performance contracting under ESCO business.

Public street lighting represents a significant load for India. It is the responsibility of the municipal Councils and the state electricity boards to provide this service to the country. In several municipalities, the electricity required for this service is not metered, providing little incentive for system improvement. Street lighting has to be invoiced at a preferred rate by most of the utilities. This incurs large financial losses to the state electricity board. With a demand of more than 1,000 MW, public lighting represents approximately 1% of the total electricity consumed in India. Even if this represents a small percentage of the total consumption, it is an interesting segment due to its high potential for energy savings (average of 33% of the consumption).

The project will rely on an approach that was demonstrated by Econoler International and Asian Electronics Ltd in two pilot projects in India (at Indore and Ujjain) that received a financial support from the Canadian International Development Agency (CIDA). This route has yielded measured savings of close to 60% without reduction in lux levels. These two Projects established the validity of the concept, processes and formats for record and reporting for those to follow.

The present CDM Project replicates the scheme in 15 municipalities spread in India. The technology was changed to full replacement of existing FTL / HID fittings by energy-saving T5 lamp-based fittings with electronic ballast and load management system, viz,

- Replacement of low efficiency T12 FTL (40W) driven by magnetic ballast with high efficiency T5 (24W) driven by electronic ballast
- Replacement of low efficiency single lamp HPS/MV/MH 70/125/150/250W driven by magnetic ballast with high efficiency multi-lamp T5 (14/24W) driven by constant wattage electronic ballast.
- Installation of Load Management System (LMS) panels at the Switching Points (SP)¹ to improve energy consumption of all fixture types including the T5 Fluorescent Tube Light installed at the respective SP.

Before implementation of the project, the municipalities had a lot of difficulties to maintain a good street lighting service for citizens. About 10 to 20% of fixtures were not operating because of an illegal connection, burned tube light or broken fixtures. The only way of upgrading the service to an acceptable level was to replace more and more fixtures with the same technology that the municipalities were used to. Another issue related to street lighting in India is the improper energy metering where monthly energy

¹ A switching point is a metering point in the street light electricity network.

bills are not made as per the tariff based on the actual meter readings or energy bills for non-metered are based on the connected load and the monthly operating hours.

The project proponent had been able to convince the municipalities to choose more expensive, but more efficient, equipment using the following arguments:

- It would be financed through a third party and implemented using a performance contracting concept. This means it provided the technology, entire funding and Monitoring & Verification (M&V) after the construction. If there is no saving, the project promoter will not get paid.
- The opportunity exists to leverage a portion of the required financing through the sale of Certified Emission Reduction (CER).
- The revenues generated by energy savings and CER will be shared between AEL and the participating municipalities after deduction of expenses.
- Revenue and costs will be allocated to the set of ESCO projects covered in proportion to the CERs generated by the respective project to the total of CERs generated by all projects.

Project structure

The project structure and relations between the project entities are presented in the following figure.

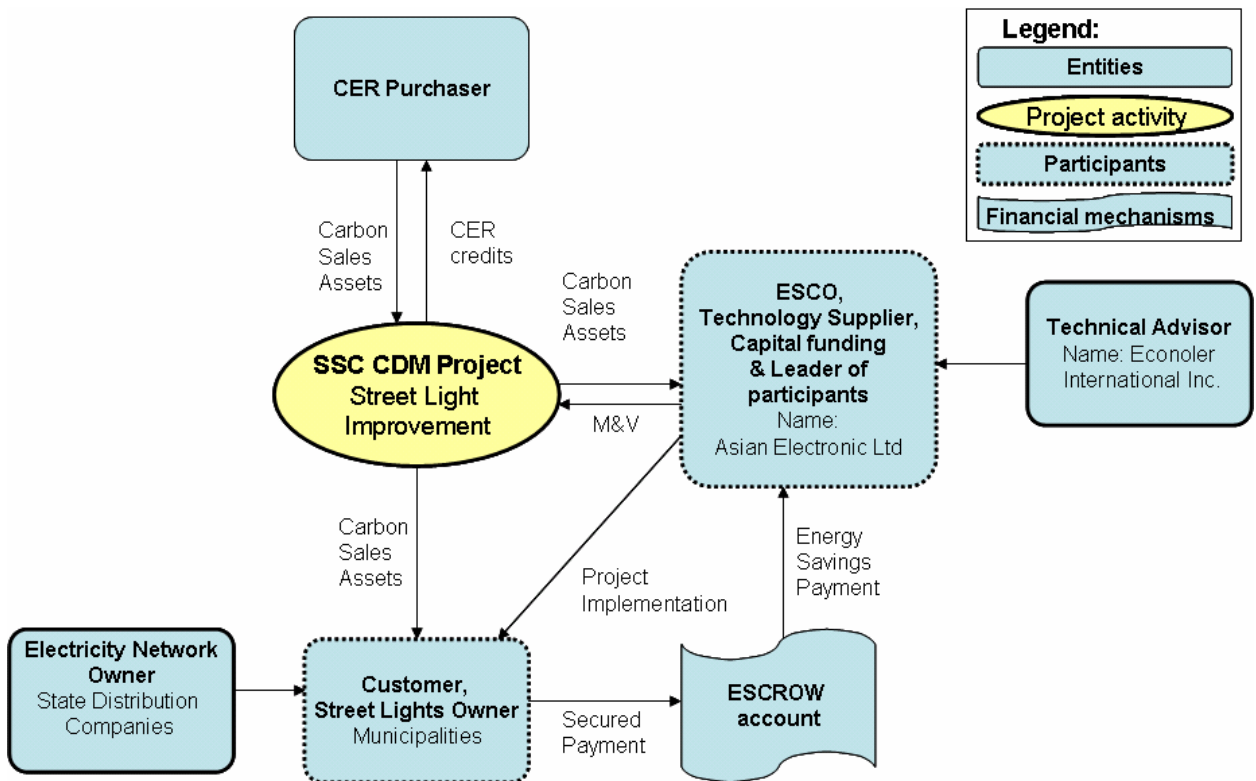


Figure 1: Energy Efficient Street Lighting CDM Project Activity Structure

Asian Electronic Limited: AEL is a private international company and was the lead participant of this SSC CDM project. As an ESCO, AEL signed a performance contract with its customers (the municipalities) and guaranteed the savings. AEL assumed the entire project implementation for its customers. This means it provided the technology, entire funding and Monitoring & Verification (M&V) after the construction. It also provided M&V for the CER accreditation procedure. It was furthermore responsible for maintaining the service to an acceptable level by ensuring a minimum number of fixtures turned off.

Municipalities: The Municipalities were the project sponsors. They are public entities. The Municipalities were AEL's customers. They pay AEL's services after the construction based on energy savings achieved. The typical payment is secured in an escrow account that will cover the monthly bills, but allow the municipalities to utilize any potential saving from reduced consumption. This provides the municipalities with incentive to adopt the projects and ensure they are maintained.

Distribution Companies: Distribution companies are wholly owned by State Electricity Boards (SEB). SEBs are state Government owned companies responsible for the electricity production. They are stakeholders in the energy savings project and could provide support for upgrading the metering system for this DSM project.

Econoler International: EII is a Canadian private company and acted as the project developer. EII was a technical advisor for the implementation of the Street Light Improvement Program and also provided carbon consulting.

Technology and Measures The replacement of existing fixtures by efficient T5 fluorescent tube lights leads to significant reduction in the power usage. Also, both Sodium and Mercury Vapour HID fittings can be replaced with new design multi-tube T5 streetlights which have been working successfully in pilot installations for the last two years and more. This option has yielded energy savings up to 60% and power factor (PF) better than 0.95 compared to 0.6 to 0.7 normally observed in old installations. A new dimming technology could also be integrated to the street lighting system to further reduce their energy usage during low traffic hours (usually after midnight). However, for public security reasons, this dimming is often limited to about 20%. These modifications to the existing street lighting system will also result in the reduction of power demand and distribution line losses in the network. With energy saving of 60% and PF improvement from 0.7 to 0.95, the KVA demand could reduce by as much as 70%. System measurements revealed that the wiring of the street lighting system is often stretched to the limit with significant overheating and high line losses associated with the connected load and power factor. Using a more efficient technology will significantly allow reducing line losses of the street lighting system. The combination of the technology change, and reduced line losses also effectively reduces or eliminates system saturation, thus doing away with overloading &/or making available capacity for additional fittings without requiring a complete rewiring of the system.

In the framework of this project, these two measures have been carried out:

(a) Replacement of low efficiency T12 Fluorescent Tube Light (40W) with magnetic ballast with high efficiency T5 Fluorescent Tube Light (28W) with electronic ballast

The high efficiency devices installed can save electricity up to 40-45% without reducing light level if they replace T12 fixtures because of the following characteristics. The luminous efficiency is 104 lumens/W (T5 triphosphor on electronic ballast) and even more if considering the retrofit shield effect. In comparison, the T12 efficiency is about 70 lumens/W.

(b) Replacement of low efficiency single lamp HPS/MV/MH 70/125/150/250W driven by magnetic ballast with high efficiency multi-lamp T5 (14/24W) driven by constant wattage electronic ballast.

The high efficiency devices installed can save electricity up to 60% with the required light level if they replace HID fixtures. T5 FTLs have a much longer lamp life of around 20 000 hrs which is much higher than the average HID lamps having life of nearly 10 000 hrs under field conditions and electronic ballast yields to power factors higher than 0.95 as compared with 0.6 to 0.7 of HID lamp driven by magnetic ballast.

(c) Installation of Load Management System (LMS) panels at the switching points to improve the energy consumption of all other fixture types.

This incidentally will also improve the consumption of the T5 Fluorescent Tube Light installed at the respective switching point. The LMS can save electricity up to 35% when it is installed on a SP:

- Controlled operation of the fixtures through advanced microprocessor technology (like dimming light during low traffic hours).
- Maintains the input voltage wave form without inducing any noise and harmonics.
- Equipped with a voltage monitor to protect the fixtures from operating at too low or too high voltage.

The fixtures types found in significant number in municipalities are presented in the following table.

Table 1 : Types of Fixtures and Energy Efficiency Measure Related to each Type

Low-efficiency Fixture Description, Before Project Implementation	High-efficiency Fixture Description AND/OR Energy Efficiency Measure Taken During Project Implementation	Savings Forecast
1x40W T12, 4' T12 Tube light with magnetic ballast	1x24W, 4' T5 tube with Electronic ballast	40 to 45%
70W SVL/80WMVL with magnetic ballast	2x14W 2' (or 1x24W 4') T5 Streetlight, with electronic ballasts	60%
150W SVL/125W MVL with magnetic ballast	5x14W or 4x14W 2' T5 Streetlight	55 to 60%
250W SVL/MVL with Magnetic Ballast	4x24W 2' T5 Streetlight	65%
Alternatively		
HID lamps of all types	Controlled Load Management Panel	30-35%

2. DESCRIPTION OF PROJECT AREAS:

The project boundary is the physical, geographical location of each measure (each piece of equipment) installed.

In case of the project, the project boundary is the physical, geographical location of each replaced fixture so the project boundary has the same limit than the municipalities. The project boundaries were precisely defined during the baseline measurement campaign performed along with an Investment Grade Energy Audit . For this purpose, a complete list of all fixtures actually replaced is prepared. The project excludes all equipment that is out of this list. The following figure illustrates an example of the project in Alwar, Rajasthan.

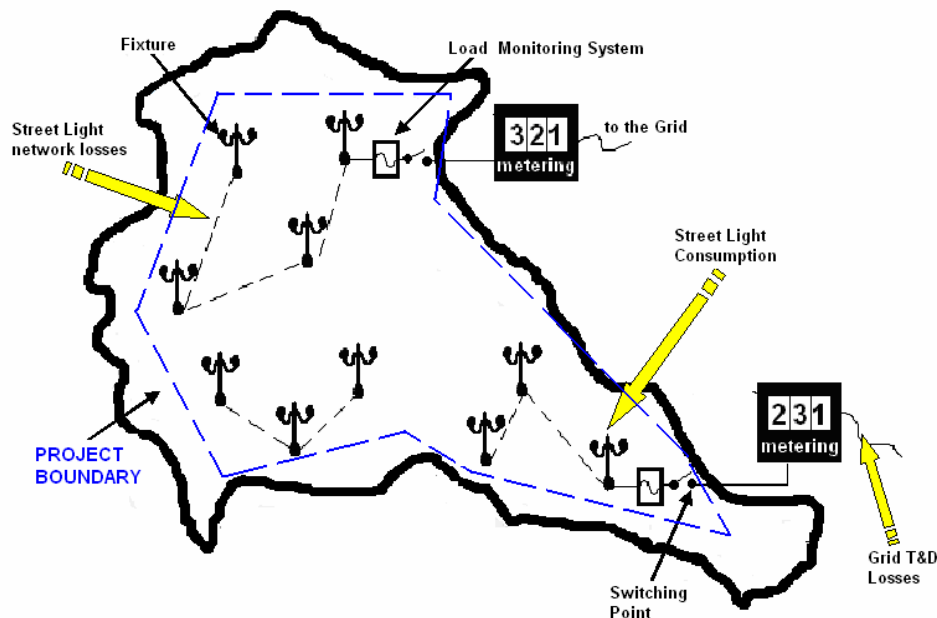


Figure 2: Boundaries of Street Lighting Project in Alwar, Rajasthan.

1. Proposed Plan of Action for the Project on Environmental aspects (will cover all the three issues as highlighted above) including responsible persons, budget if any required.
2. **Handling / Storing used/damaged light bulbs** (replaced or installed under the project as well as rejects) put out of use – proper storage before ultimate disposal in line with guidelines being developed by BEE.
3. **Safety of Workers** – Provision of personal protective equipment, traffic arrangements during installation of equipment, and emergency procedures in case of shocks, falls or other accidents.
4. **Installation and Removal of electric poles** – precautions to be taken to avoid any impact on locally important cultural resources such as shrines, temples or any important items found accidentally during excavation.

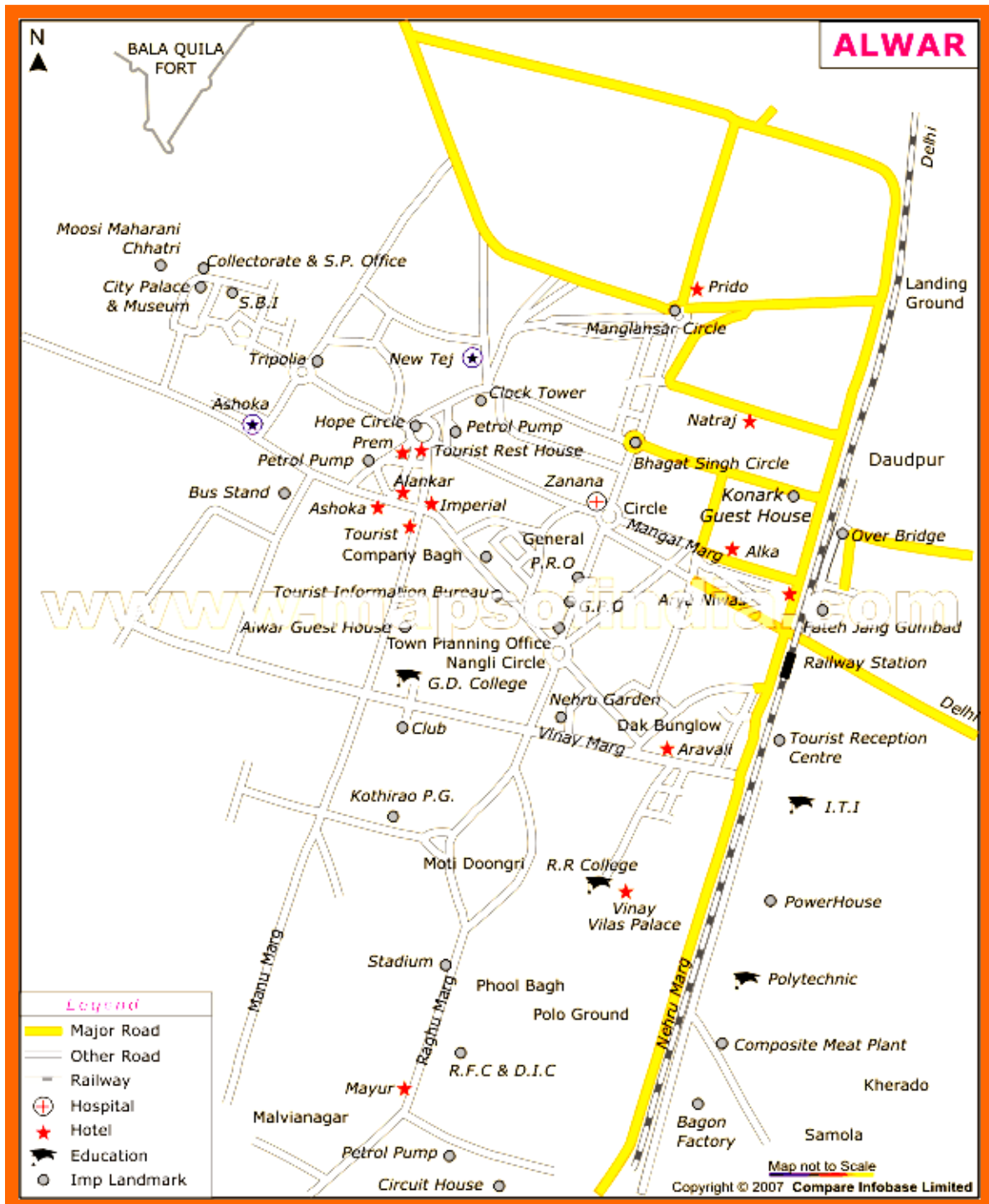


Figure 3

3. PROJECT IMPACTS AND MITIGATION OF IMPACT

Normally, these impacts can be divided into short-term installation related impacts and long-term impacts; however, with this project there are no significant long term detrimental impacts. The short-term impacts include installation traffic and noise, dust, increased sediment transport from the site, and disruption of vehicle and pedestrian traffic. The AEL and the Municipal Council of Alwar has worked with the State and local governments to ensure that all ordinances and laws are complied with during installation and operation of the facility. The specific impacts and mitigation measures are detailed below:-

3.1 Short-Term Installation Impacts and Mitigation

The impacts related to installation will likely include local increases in traffic, noise, dust, and sediment transport from the site, and disruption of vehicle and pedestrian traffic. These items will be addressed by the AEL to installation the facility and will include the following:

(a) Traffic – For traffic control and safety, installation vehicles will enter and leave the site at controlled points only. Workers will be used to direct vehicles and pedestrians to facilitate the movement of installation vehicles. Installation barriers will be erected for safety and to direct pedestrian traffic safely around the installation site. Traffic flow through the site will be coordinated with the City of Alwar as necessary.

(b) Noise - Site work activities are restricted to daytime operations. Attempts are also be made to limit unnecessary noises during the day so as to limit impact to the adjoining buildings containing offices, classroom, and residences. This is a short-term impact that will cease when the installation is completed.

(c) Dust – As the project involves only replacement of streetlights, no digging activity takes place , thus no dust is generated.

(d) Particulates in Air - Particulate emissions will be controlled by the off-site disposal of installation and removal debris. Burning of such materials will not be allowed on the site. Any lead, mercury and plastic containing materials will be removed by licensed abatement contractors using appropriate means to limit particulate emissions.

(e) Generated Wastes - Environmentally deleterious materials generated by the replacement activities, such as old or broken lamps will be stored separately & disposed in an appropriate, legal, and safe manner. In the event that hazardous wastes are generated during elimination, the contractor will properly dispose of them off site in accordance with appropriate disposal regulations.

3.2 Long-Term Impacts and Mitigation

There is a potential for historic facility impacts, however, these are not expected to be significant.

1. Wastes: The operation of these lighting fixtures will not generate waste except failed lamps which will be stored separately and disposed as per the BEE guidelines.

2. Vegetation and Habitat Loss: Careful coordination will occur so as not to disturb any existing landscaping.

3. Water Consumption: This project will not result in any change in water consumption at Municipal Council Area of Alwar.

4. Water Quality: No water quality impacts are anticipated.

5. Noise: The operation of these lighting fixtures will not generate any noise.

6. Historic Facility Impacts: The Site is located near historic structures; for example, it is located directly across Nehru Garden. However, this project will improve the view of the Garden Street by eliminating HPSV/HPMV and installing T-5 energy efficient light fixtures.

7. Parks, rivers, and other recreational areas will not be impacted.

8. Traffic: No long term impacts to local traffic are anticipated.

9. Wildlife refuges, wetlands, wilderness areas, and other important natural areas will not be impacted.

10. Public or private water supplies and/or significant water supply watersheds will not be impacted.

11. Endangered, threatened, or rare plants, animals or insects will not be measurably impacted by this project. No unique or other important terrestrial vegetation will be impacted. The site consists of a paved road, walkways, and lawn areas.

12. This project will not impact geologic or mineral resources. There are no significant geologic or mineral resources at the Site.

4. PROPOSED PLAN OF ACTION FOR PROJECT ON ENVIRONMENTAL ASPECTS:

Handling / Storing of used / damaged light bulbs:

4.1 Old lamps removed during installation

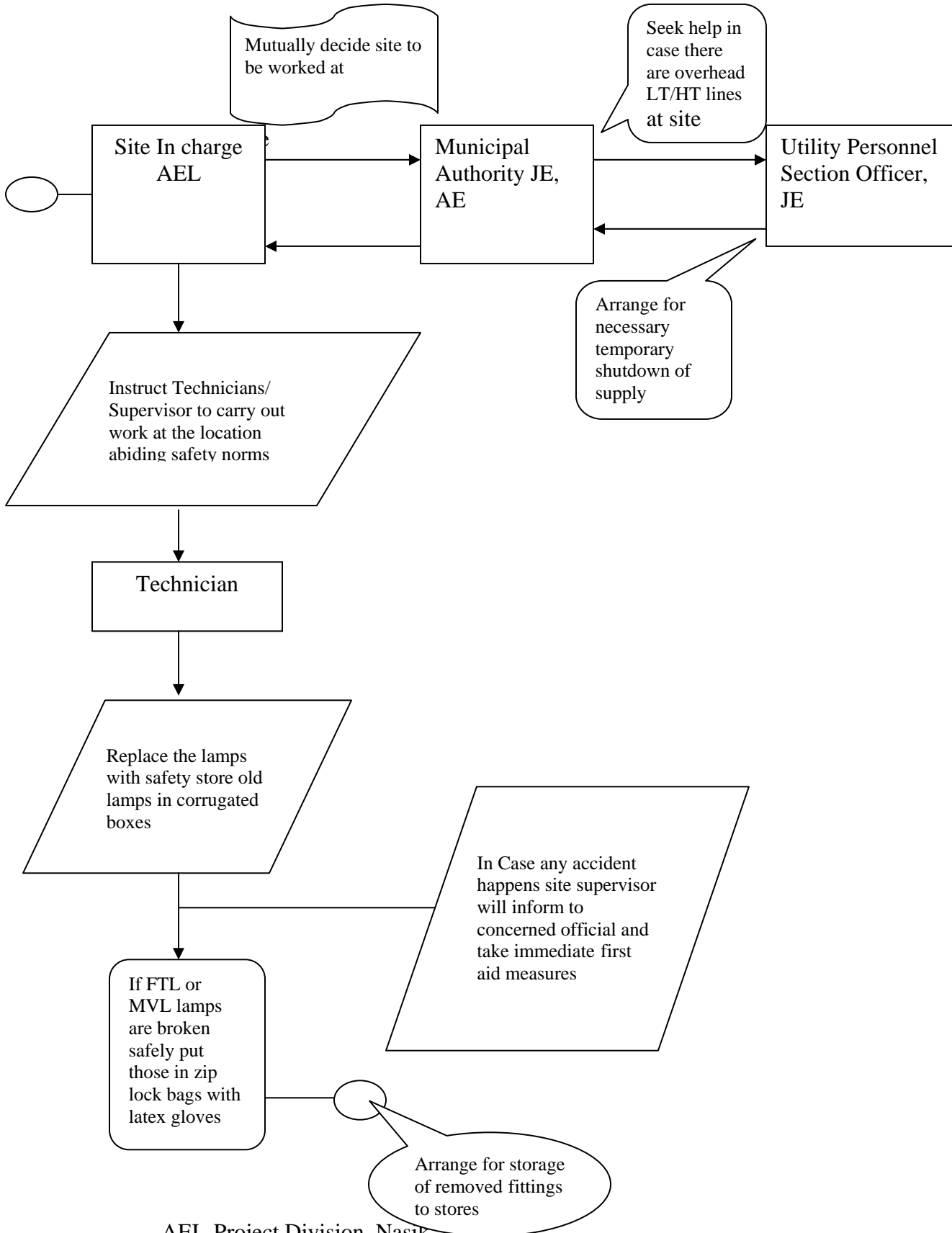
During installation of new energy saving streetlights, old streetlights are removed and stored in the corrugated box along with the lamps fitted into the old fittings in case of sodium vapor lamps. In case of replacement of old fluorescent tube light fittings, the lamps are carefully removed first followed by the fitting. The lamps are kept in a separate box. A record sheet (given below) is maintained while removing the old fittings mentioning the number of lamps removed.

These old removed fittings & lamps are transported daily to the place of storage (store depots / ward office stores) given by the Council. The old fittings are then kept in a proper store room under lock & key. The units are not allowed to be used for re-installation.

Any lamps broken during the removal, transportation or storage of the old fittings are carefully collected and kept in a separate corrugated box for further disposal. The box is kept properly in the stores.

The responsibility of the old fittings and lamps stored rests with the respective Jr.E./ A.E. stores in-charge / J.E/ A.E. (ward office) in-charge in the respective municipal Councils. Data format from site is being given below for reference:-

4.2 A flow-chart is being given below which shows the significance role while carrying out installation & maintenance work at site:



4.3 Removed Fittings and Lamps Record during installation

Energy Saving Streetlight Project: Alwar Municipal Council

Record No.:AL/R-01-09/R-02

Date	No of fittings removed	Type of Fittings 40w/125w/ 150w/250w	No of fixtures/covers broken during installation	No. of fixtures lamp missing	Remarks
28/01/09	109	40w	3	Nil	No Covers
29/01/09	100	40w	2	Nil	No Covers
29/01/09	23	S-70w	4	2	Ok
30/01/09	63	S-150w	3	Nil	2 no. W/L
31/01/09	135	40w	7	4	No Cover
1/02/09	115	40w	Nil	Nil	No Cover
2/02/09	60	S-70w	Nil	Nil	Ok
2/02/09	59	S-150w	3	Nil	Ok
3/02/09	112	40w	12	16	No Cover
3/02/09	124	40w	Nil	Nil	No Cover
4/02/09	160	40w	16	14	No Cover
5/02/09	97	S-70w	3	7	Ok
6/02/09	6	S-150w	Nil	Nil	OK
7/02/09	5	S-150w	4	11	Ok
8/02/09	15	S-250w	Nil	Nil	OK
9/02/09	70	40w	4	8	No Cover
10/02/09	77	40w	Nil	5	No Cover
11/02/09	109	40w	17	22	No Covers
12/02/09	12	S-70w	1	Nil	7 no. W/L
13/02/09	40	150w	Nil	5	No Covers
14/02/09	08	250w	1	2	OK
15/02/09	122	40w	5	7	No Covers
16/02/09	107	40w	Nil	Nil	No Covers
17/02/09	171	40w	10	Nil	No Covers
18/02/09	50	S-70w	8	3	OK
19/02/09	3	S-150w	1	Nil	1 no.W/L
19/02/09	2	S-250w	Nil	Nil	OK
20/02/09	95	40w	Nil	Nil	No Cover
21/02/09	84	40w	7	Nil	No Covers
22/02/09	25	S-70w	2	6	OK
23/02/09	2	S-150w	Nil	Nil	No Covers
23/02/09	4	S-250w	Nil	Nil	No Covers
24/02/09	98	40w	4	Nil	No Covers
25/02/09	105	40w	Nil	Nil	OK
26/02/09	112	40w	9	5	No Covers
27/02/09	43	S-70w	2	3	OK
28/02/09	8	S-150w	6	Nil	No Covers
2/03/09	12	S-150w	Nil	8	OK
3/03/09	13	S-250w	Nil	Nil	OK
4/03/09	96	40w	13	11	No Covers
5/03/09	105	40w	11	9	No Covers

Asian Electronics Ltd
ESCO Project Division

5/03/09	113	40w	8	5	No Covers
6/03/09	105	S-70w	4	6	OK
7/03/09	13	S-150w	7	Nil	OK
9/03/09	17	S-250w	2	3	No Covers
9/03/09	27	40w	3	2	No Covers
9/03/09	9	S-70w	Nil	Nil	No Covers
10/03/09	11	S-150w	Nil	7	OK

Note : Installation work is in progress and expected completion of installation is April 2009

Store Incharge
AMC, Alwar

Site-Incharge
Asian Electronics Ltd.

4.4 Lamps failed during the O & M period:

During the O & M (operation & maintenance) period of the project, the fittings are being monitored for failures in lamps. The faulty lamps are replaced with new lamps. The faulty lamps are brought back to the maintenance depot / office and stored safely in corrugated box. These lamps are stored until further instructions of disposal as per BEE norms are received.

The responsibility of storage of these lamps rests with the Service in-charge of the company in the respective cities. A data format is being attached for reference that is being maintained at site.

4.5 Monitoring and reporting mechanism for replaced lamps during maintenance

Energy Saving Streetlight Project: Alwar Municipal Council

Record No.:AL/08-09/MC-01

Month	No of lamps changed		No of fixtures lamp missing/damaged		Remarks
	2Ft	4Ft	2ft	4ft	
Jan- 09	0	87	0	12	2Nos. Fixtures Broken
Feb - 09	8	78	12	9	5 Nos. Fixture theft
March- 09	83	55	14	24	7 Nos. Fixture theft

Service In charge

5. SAFETY OF WORKERS :

The installation of the new fittings is done by workers as per the safety guidelines given. Firstly the installation is done during the day-time with the entire power supply to the fittings shut OFF. This is done by removing the fuse from the feeder points. Before the start of installation the concerned Council officials are informed about the exact location of the work, in order to avoid any accidental switching ON of the power by another maintenance team.

While installation the workers are provided with helmet, rubber gloves, rubber shoes, insulated tools and safety belts.

Proper care is taken to divert the traffic while carrying on the installation. Sign boards indicating “Work in progress” are put on the road where necessary. One worker is always standing on the road ahead of the ladder & diverting the traffic.

The workers are provided with proper extension type ladders for installation of streetlights above 7 meters. The ladders are provided with safety platforms covered from all sides for safety of the worker. At lower heights wooden ladder is used for removing the fittings for repairs.

Proper medical kit is carried containing bandages & medicines. Wooden ladders/bamboos are kept handy in case of any emergency of shock.

All the workers are covered under state insurance scheme. This gives them free medical treatment in case of any accident or illness in their dedicated hospitals. In case of any accident the workers are given first aid at the nearest medical center / hospital. If required the worker is then taken to the ESIC hospitals for further treatment.

5.1 SAFETY MEASURES FOR INSTALLATION AND MAINTENANCE OF STREETLIGHTS

A. Safety requires proper planning of work, proper usage of safety tools, exercise of good judgment and intelligent supervision. Experience proves that majority of the accidents are preventable.

- (i) Prevention of accidents requires the wholehearted co-operation of all employees of the organization. A capable mentally alert employee will avoid accidents.
- (ii) A careless man is a liability to the Organization. He is dangerous to himself, his fellow workers, the public and the Organization.
- (iii) Accidents do not just happen. Accidents are the result of unsafe acts or unsafe conditions or a combination of both.

B. Unsafe Acts: Which may cause accidents, include the following:

- (i) Opening and Closing of switches without authority or warning, pushing ladders

- on road without giving attention towards traffic, failure to place warning signs or signals where needed.
- (ii) Working unsafely such as throwing materials or tools, at another worker, jumping from vehicles and platforms, or unnecessary haste.
 - (iii) Not using the safety tools provided.
 - (iv) Using unsafe equipment, wrong tools for the job, or using hands instead of hand tools.
 - (v) Working on live electrical equipment unless necessary (with safety precautions) in cases of energy meter installations at switching points.
 - (vi) Working while ladder is in unsafe/tilted position.
 - (vii) Distracting, teasing, practical joking, horseplay, quarrelling or annoying.
 - (viii) Failure to use safe clothing or protective equipment such as failure to use rubber gloves, helmet.

C. Unsafe conditions: Which may result in accidents include the following:

- (i) While working with ladder on roads, which are skewed, widthwise from center it is always possible the ladder itself will tilt and it will be unsafe to climb on it to replace a fixture on pole.
- (ii) There can be overhead utility LT/HT lines while the fixture on pole might be at few inches from those lines. All anticipated hazards should be pointed out to workers.

D. General Instructions for Safety

(i) Responsibility of Individuals:

Definite responsibility of individuals is to act so as to provide.

- Safety to himself.
- Safety to his fellow employees.
- Protection to the Public.
- Protection to the Organization property.
- Every employee is expected to study the Safety Manual, familiarize himself with its contents and apply them to work. Ignorance of Rules and Regulations will result in accidents to himself and his co-workers.
- Whenever in doubt regarding any rules and regulations, he should consult his Supervisor.
- Before attempting any work under conditions that he considers to be unsafe, he is required to bring them to the attention of the person-in-charge of the work and seek his advice.
- It will be the duty of every employee to report promptly to his Supervisors any dangerous or improper condition of equipment he notices.

(ii) Personal Conduct:

- Use of intoxicating liquor while on job is strictly prohibited. No employee

shall report for work while he is under the influence of liquor and no supervisor shall knowingly permit a man to go to work while he is under the influence of liquor.

- Practical joking and horseplay while on the job is strictly prohibited.
- No employees shall distract the attention of another worker from his job unless he thinks that the worker is doing something, which is dangerous.
- Any employee who endangers his own or other's safety by violating the foregoing requirements of personal conduct shall render himself liable to disciplinary action.

(iii) Always Be Careful (A B C):

The workman should place himself in a safe position while working to avoid falling, stumbling, or moving backwards against live parts.

The workman should satisfy himself regarding the safe working conditions before starting the work. The care exercised by others should be checked.

5.2 FIRST AID

(a) Removal from Contact

If the person is still in contact with the apparatus that has given the shock, switch off the electric circuit at once, if there is switch, fuse or circuit breaker close at hand, if not, lose no time from proceeding to remove the body from contact with the live conductor.

- Do not touch the victim's body with bare hands, but if rubber gloves are not at hand, pull him off the live conductor by his coat, shirt, etc., if they are not wet or fold your coat, or some dry article such as a news- paper into three or more folds/ thickness, and using this as a pad, take hold of the body and pull it away from the circuit. An operating rod or a broom handle may be used to raise the body or to detach the wires from it. A good plan is to stand on a dry board or stool or on a few layers of thick newspaper or bundle of dry sacking and remove the victim away from the live apparatus.

(b) Treatment from Electric Shock, Asphyxiation

- In most of the cases of electric shock and collapse, it is the lungs and the diaphragm (the thin sheet of muscles which lies below the lungs) that have stopped working and there is a very good chance of revival by applying artificial respiration quickly.
- In case of severe shock, respiration is seldom established under one hour while three to four hours or more might be found necessary to restore normal breathing. It is therefore, essential that in all cases of electric shock where the condition of the patient is doubtful or the patient is unconscious or not breathing, artificial

resuscitation should be continued until the patient breathes normally or until the doctor has pronounced life extinct.

5.3 SAFETY GUIDELINES FOR WORKMEN

- While working for installation or maintenance, first ensure that the power is switched OFF to the network of streetlights by removing the fuses on load side.
- Carry all the safety tools and always uses a safety belt when climbing on the ladder or pole. Clamp the safety belt on the ladder or the main pole while changing the fitting.
- Wear rubber gloves or gauntlets for touching any electrical parts inside or near switching point.
- During maintenance work with the switching point e.g. timer, contactor maintenance, ensures that is accompanied by an assistant with an effective torch light if working at night.
- Before a technician undertakes any work on a pole or any other line support, he should first make a complete inspection from the ground of the position of all live wires, in order to determine the amount of precautions to be adopted and should inspect his insulating equipment and operating tools and tackles for their good condition before he attempts to do the actual work.
- Usually pushing type aluminum ladders tend to become vulnerable due to vibrations they encounter on uneven roads as the nut bolts get loosened so it is needful to have through checkup periodically say after one weeks use and necessary steps are to be taken so that ladder can be used without any risk to anybody.
- While climbing on ladder he should have his hands free and after reaching the work platform he should wear the safety belt tied to the ladder.

5.4 SAFETY DEVICES & TOOLS

The following are the minimum requirements of safety devices and special tools:

- a. Safety Helmets
- a. Rubber Gloves
- b. Safety Belts
- e. Ladders
- f. Ropes
- g. Hand Tools kit
- h. First aid box containing Dettol, bandage, burnol, cotton, painkiller pills .

5.5 Daily records of Safety Kit distribution during installation

Energy Saving Streetlight Project: Alwar Municipal Council

Safety Kit includes: helmet, rubber gloves, rubber shoes, insulated tools, safety belts & first aid box given to five teams.

Date	Site Location	No. Of Technicians	Safety Equipments Used	Duration Of use	
				From Time	To Time
28.01.09	Town Hall	12	Safety Kit (5 nos)	8.00 am	5.00pm
29.01.09	Town Hall	15	Safety Kit (5 nos)	8.30 am	5.00pm
30.01.09	Mohana ka Pyau	13	Safety Kit (5 nos)	8.00 am	5.30pm
31.01.09	Delhi Gate	22	Safety Kit (5 nos)	9.00 am	5.30pm
2.02.09	Delhi Gate	22	Safety Kit (5 nos)	9.00 am	5.30pm
3.02.09	Kedal Ganj	17	Safety Kit (5 nos)	8.40 am	5.00pm
4.02.09	Pratap Bans	10	Safety Kit (5 nos)	8.30 am	5.00pm
5.02.09	Mohana Ka pyau	21	Safety Kit (5 nos)	8.30 am	5.00pm
6.02.09	Mangal Vihar	23	Safety Kit (5 nos)	8.30 am	5.00pm
7.02.09	Mangal Vihar	14	Safety Kit (5 nos)	8.30 am	5.00pm
8.02.09	Daud Pur	14	Safety Kit (5 nos)	8.30 am	5.00pm
9.02.09	Kala Kuna	10	Safety Kit (5 nos)	8.30 am	5.00pm
10.02.09	Kala Kuna	24	Safety Kit (5 nos)	8.30 am	5.00pm
11.02.09	Mangalanshar	16	Safety Kit (5 nos)	9.00 am	5.30pm
12.02.09	Manu Marg	12	Safety Kit (5 nos)	9.00 am	5.30pm
13.02.09	Manu Marg	21	Safety Kit (5 nos)	9.00 am	5.30pm
14.02.09	Ashoka Talkies	13	Safety Kit (5 nos)	9.00 am	5.30pm
15.02.09	Ashoka Talkies	9	Safety Kit (5 nos)	9.00 am	5.30pm
16.02.09	Kashi Ram Chouraha	12	Safety Kit (5 nos)	9.00 am	5.30pm
17.02.09	Town Hall	19	Safety Kit (5 nos)	9.00 am	5.30pm
18.02.09	Pratap Bas	19	Safety Kit (5 nos)	8.40 am	5.00pm
19.02.09	Kashi Ram Chouraha	14	Safety Kit (5 nos)	8.40 am	5.00pm
20.02.09	Daudpur	13	Safety Kit (5 nos)	8.40 am	5.00pm
21.02.09	Kala Kuan	14	Safety Kit (5 nos)	8.40 am	5.00pm
22.02.09	Mangelanshar	13	Safety Kit (5 nos)	8.40 am	5.00pm
23.02.09	Kedal Ganj	13	Safety Kit (5 nos)	8.30 am	5.00pm
24.02.09	Pratap Bans	11	Safety Kit (5 nos)	8.30 am	5.00pm
25.02.09	Ghodapher Chowk	11	Safety Kit (5 nos)	8.30 am	5.00pm
26.02.09	Kashi Ram Chowk	14	Safety Kit (5 nos)	8.30 am	5.00pm
27.02.09	Daudpur	12	Safety Kit (5 nos)	8.00 am	5.00pm
28.02.09	Mohana Ka pyau	10	Safety Kit (5 nos)	8.30 am	5.00pm
1.03.09	Kedal Ganj	10	Safety Kit (5 nos)	8.00 am	5.30pm
2.03.09	Daud Pur	14	Safety Kit (5 nos)	9.00 am	5.30pm
3.03.09	Town Hall	14	Safety Kit (5 nos)	9.00 am	5.30pm
4.03.09	Delhi Gate	15	Safety Kit (5 nos)	8.40 am	5.00pm
5.03.09	Manu Marg	14	Safety Kit (5 nos)	8.00 am	5.00pm
6.03.09	Ghoda Ka Pher	13	Safety Kit (5 nos)	8.30 am	5.00pm

Site In charge -----

6. INSTALLATIONS AND REMOVAL OF ELECTRIC POLES :

The nature of work involves only removal of old streetlight fittings & installation of new fittings. We do not remove any electric poles; no digging work is involved during the course of the work.

The nature of our work , removal of old fittings & replacement with new energy saving fittings does not affect the lighting at night for any areas including local cultural areas, as the work is completed only during the daytime.